
External ICC Import Procedure

Shiraz RIP

Per Gudntiz (12/2013)

How to use externally made ICC profiles in Shiraz

It is possible to use ICC profiles made for the printer drivers in Shiraz RIP although the result may vary. You will need to use the Shiraz Colour Module for this.

If you have downloaded the profiles from a paper manufacturer then install the profile by following the instructions given by the vendor.

For Windows the ICC profile will be copied to **\Windows\System32\Spool\Driver\Color**

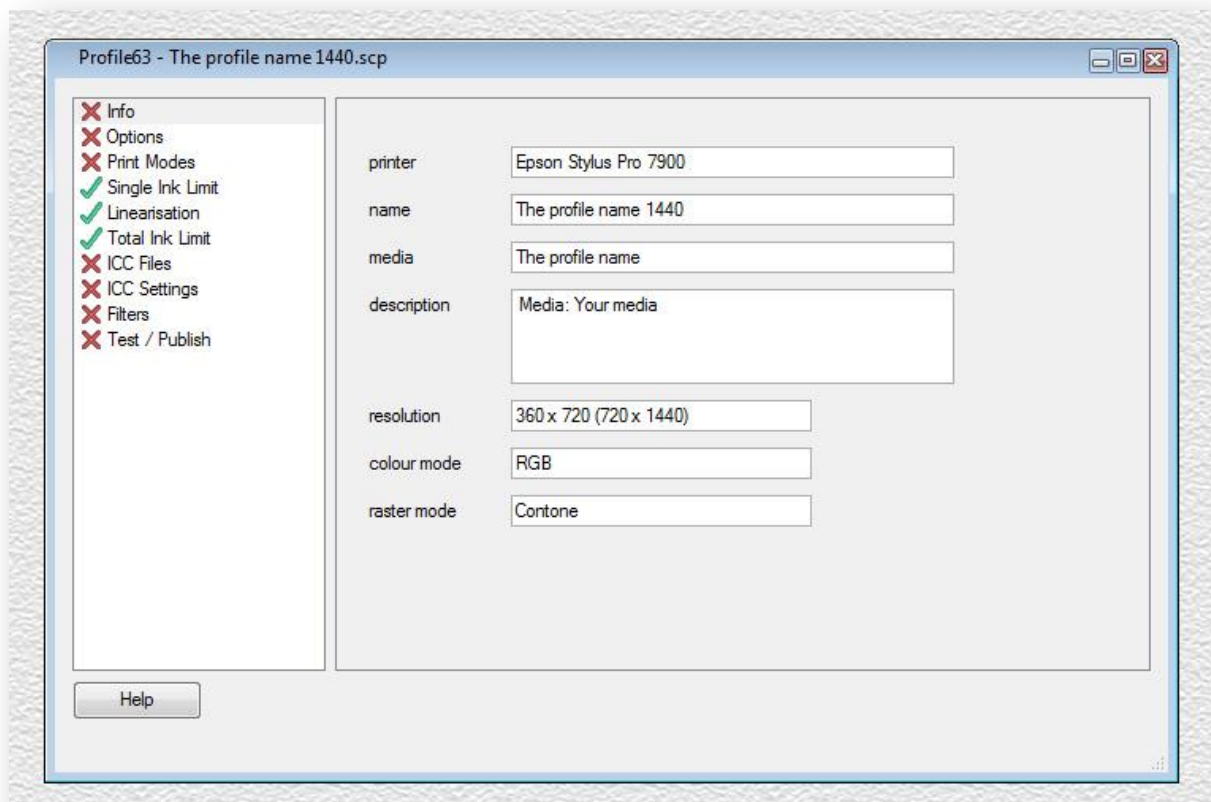
For Mac OSX 10.6 the ICC profile will be copied to **/Library/ColorSync/Profiles**

For Mac OSX 10.7 and higher **/Users/<username>/Library/ColorSync/Profiles**

In order to use these ICC profiles for the Shiraz RIP please simply copy the ICC (or ICM) profiles in to a folder on your desktop.

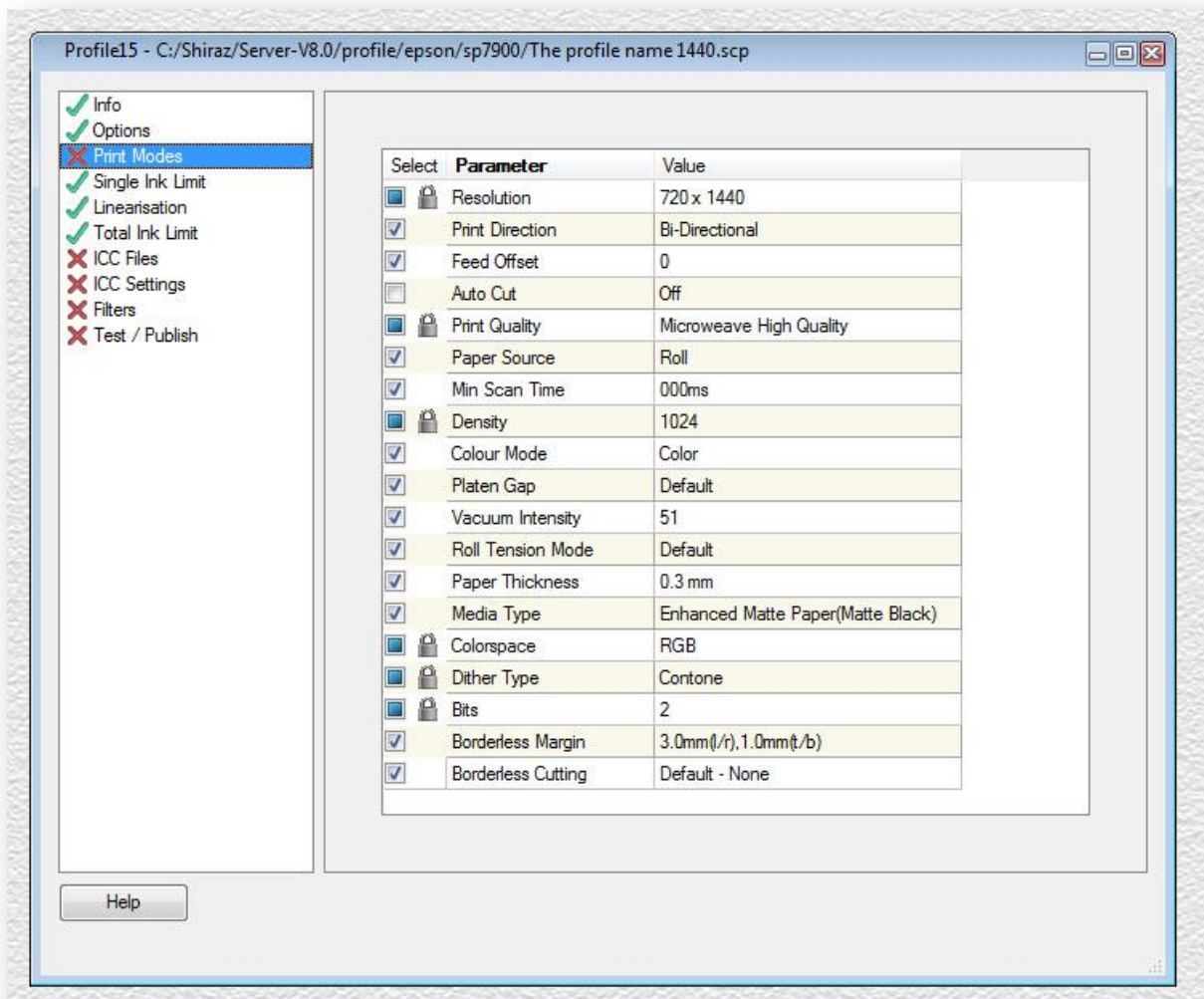
Epson printers

In the Colour module open the template 'Profile Template for external ICC profiles 1440' and you will see the profile table below.

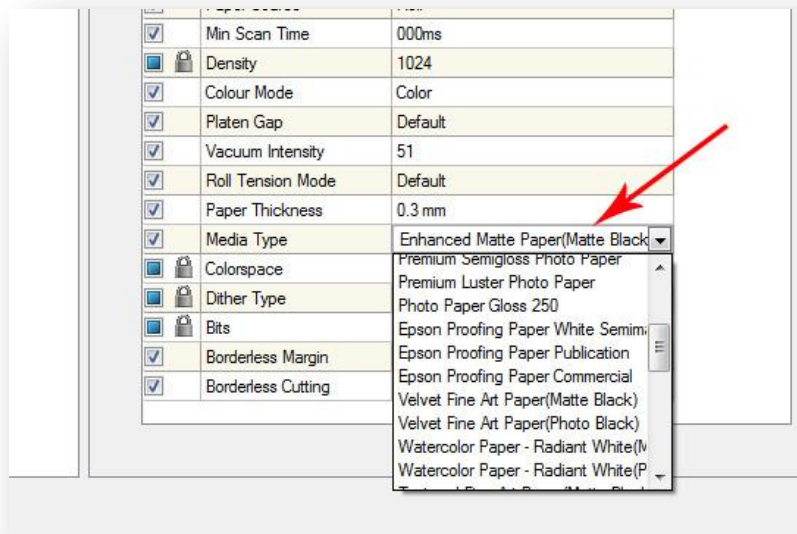


In the field for *name* you type in the name of the profile, usually the name of the media. Here it is called “The profile name”, and after that you put in the resolution 1440, like shown. In the media field you should write the same, but without the mention of the resolution.

In the description field you should normally put a description of the media. Right click on *Info* and select the green tick icon to indicate that the step is completed. Do the same for *Options*. Now click on *Print Modes* and you will see a similar window similar to the one shown below, this may depend on the particular printer model.

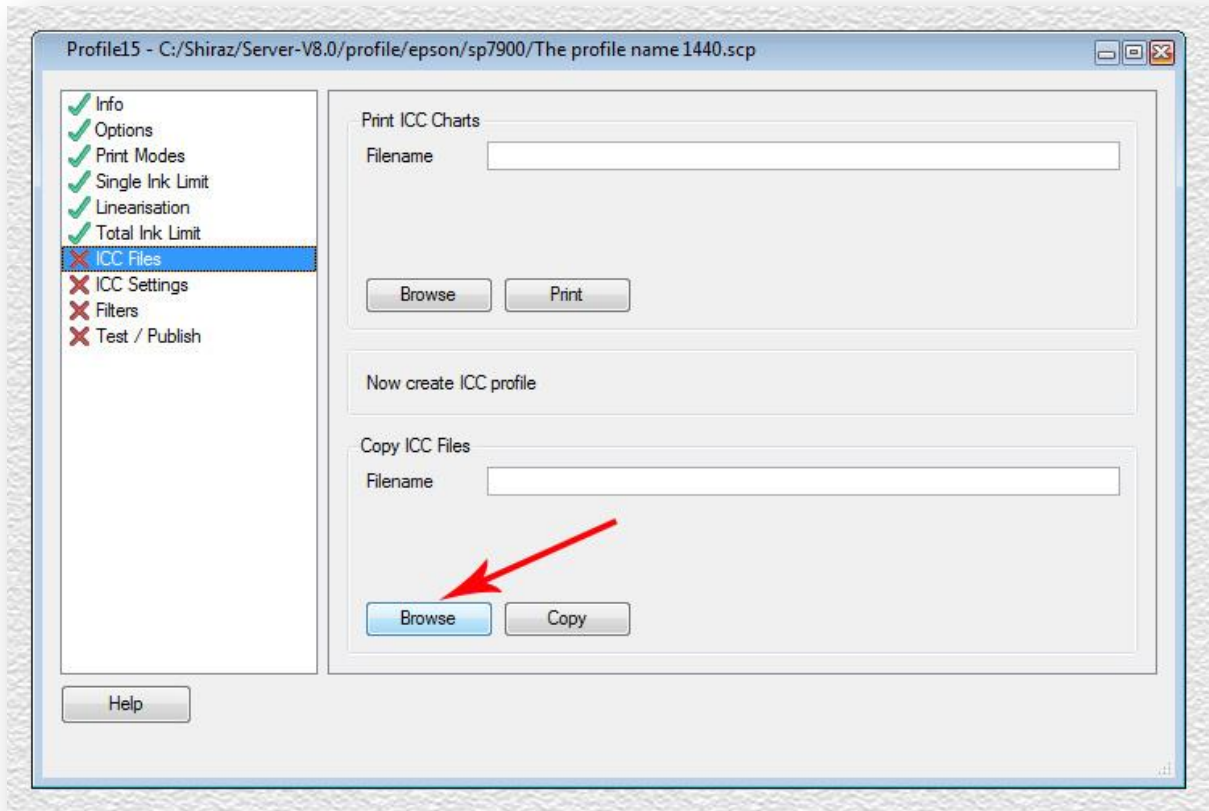


Now navigate down to the *Media Type* field and click on the media under the Value column and you will see a list of media as shown below.



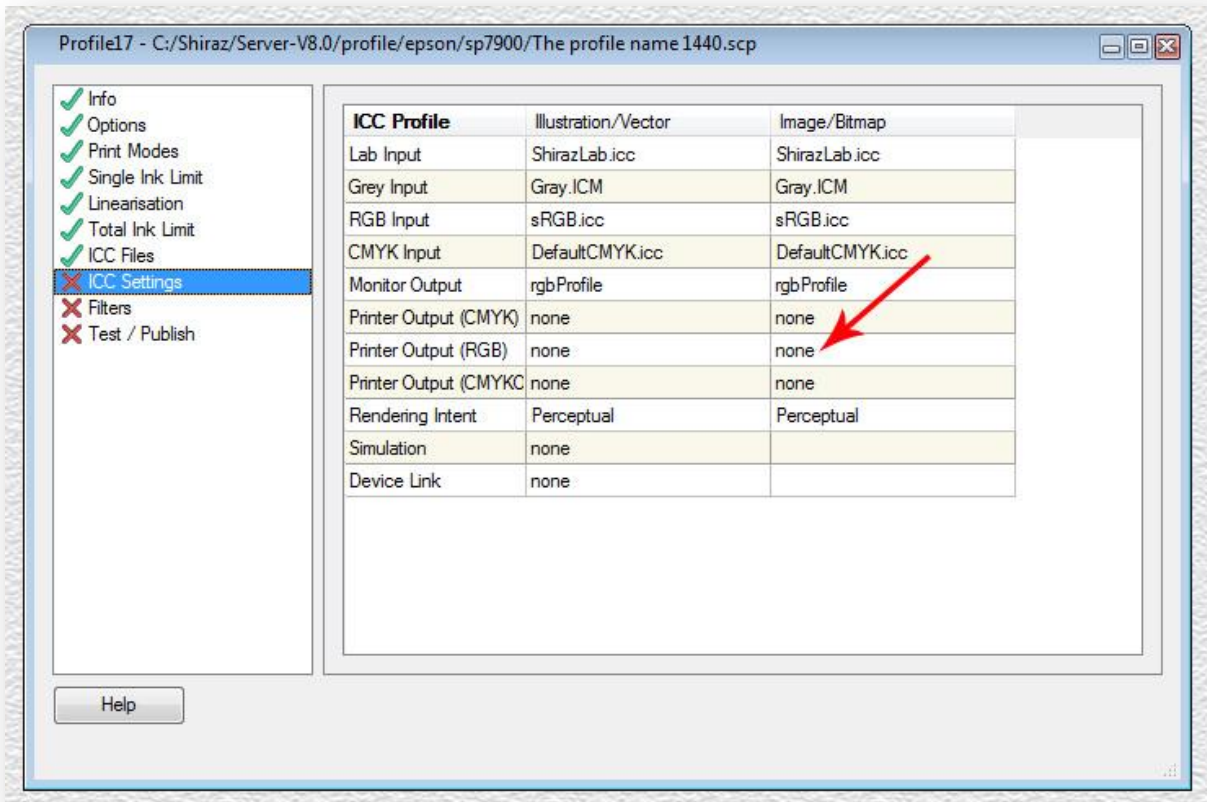
Now click on the media name for the profile you want to use (if Epson media) or the media name you think is the nearest to the media you will be creating the profile table for. This information will probably be included with the ICC profile although for some manufacturers it may not be so obvious.

Again right-click and select the green tick icon for the *Print Modes*. Now click on the *ICC Files* entry, you will then see the following screen:



Click on the bottom *Browse* button as shown above. Now find the ICC profile that you copied on to your desktop earlier. Select it and then click on *Open*. The full file path should now be shown in the *Filename* entry. Now click on the *Copy* button next to the *Browse* button and the profile will be copied to the correct profile folder for the Shiraz RIP.

Check the green tick icon for the *ICC Files* entry. Next click on the *ICC Settings* and you should then see the following screen:



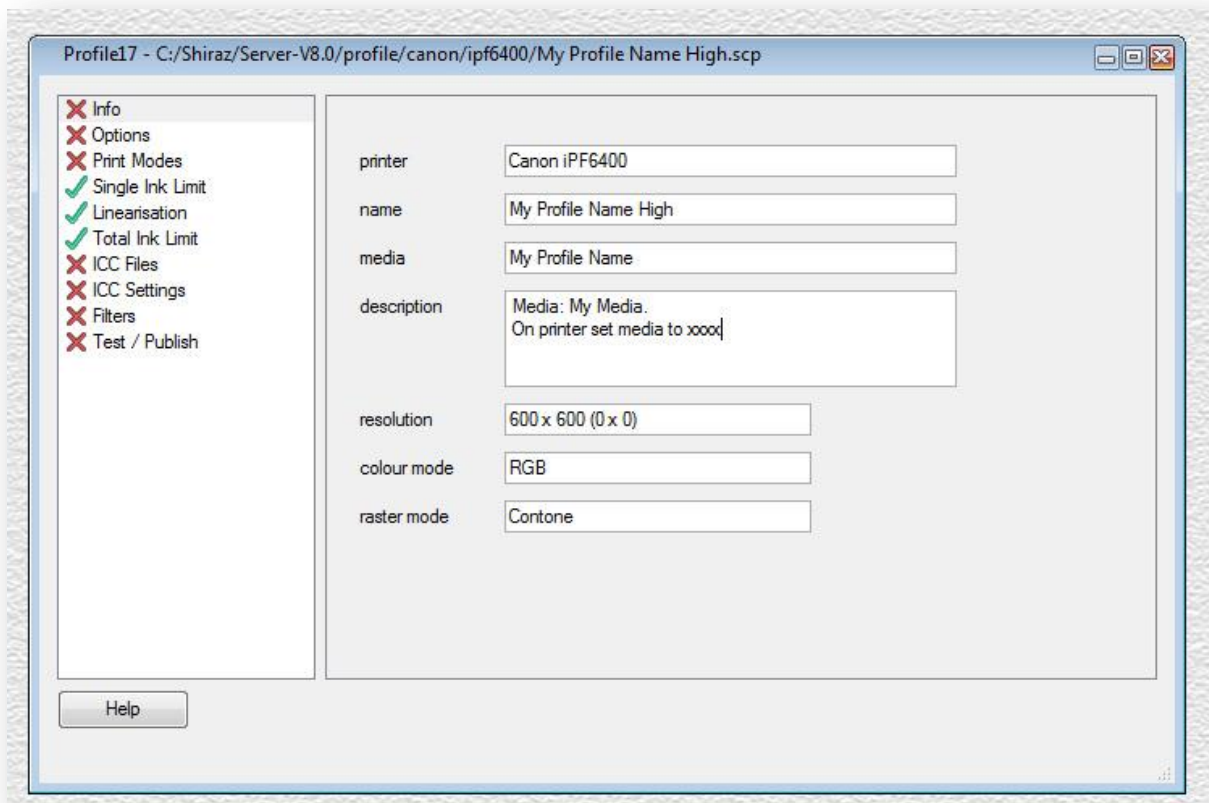
Click on *none* for *Printer Output (RGB)* as indicated above. Wait a few seconds and you will see a list of profiles installed for the printer. Find the one you have just copied and click on it to select. Do the same for the other column *Illustration/Vector*.

You are now almost done. All that is left to do is to check the green tick icon for all remaining entries. Finally click on the *Test / Publish* entry and click on the *Date Stamp* button to add the time stamp for the profile table and click on the *Publish* button to finish the process.

You should now test the profile by printing your test images. Please bear in mind that because the ICC profiles were not made for Shiraz RIP, we cannot guarantee the quality of these.

Canon printers

In the Colour module open the template 'Profile Template for external ICC profiles High' and you will see the profile table below.

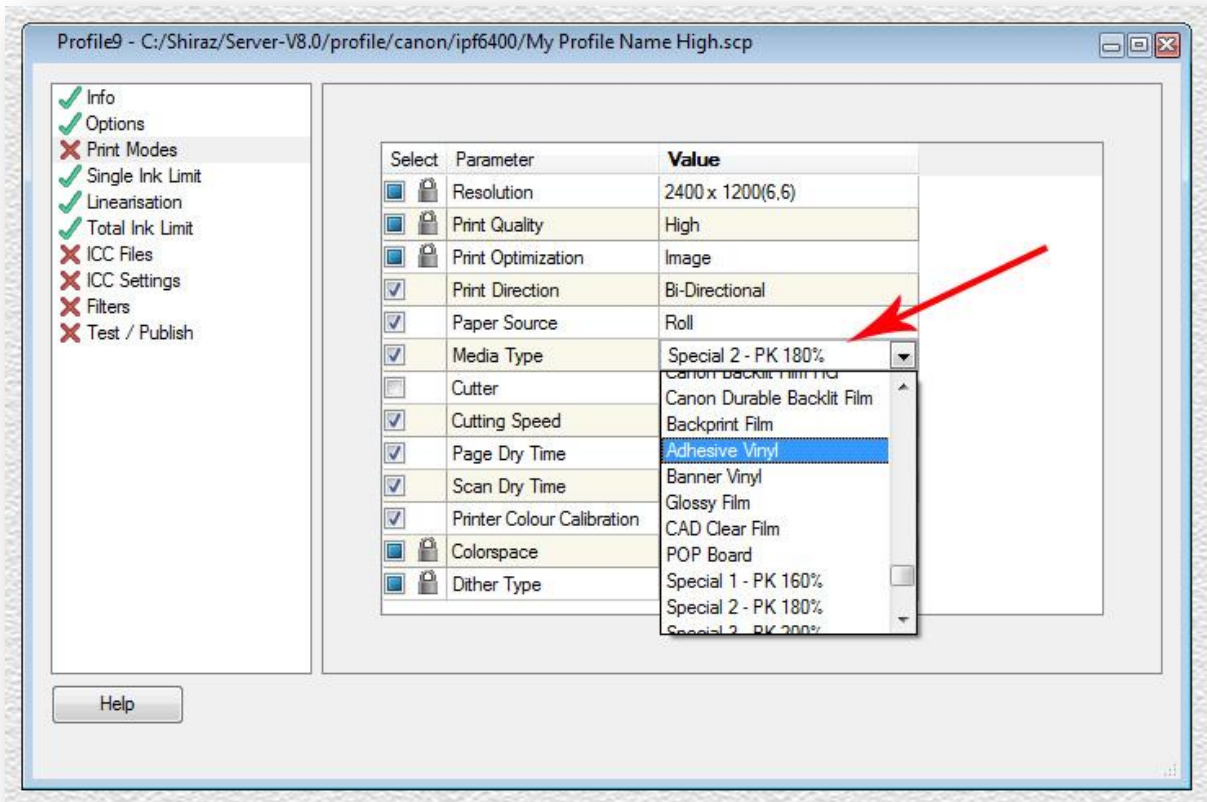


For Canon printers you have to set a media not only in the profile, but also on the printer. This information should be available from the manufacturer but may not be obvious at first.

In the field for *name* you should type in the name of the profile, usually the name of the media. Here it is referred to as 'My Profile Name'. Append the word 'High' after the name to indicate the print mode used. In the *media* field you should just type the media name as shown above. In the *description* field you not only put a detailed explanation of the media used, but also mention what media should be set on the printer front panel when using this profile.

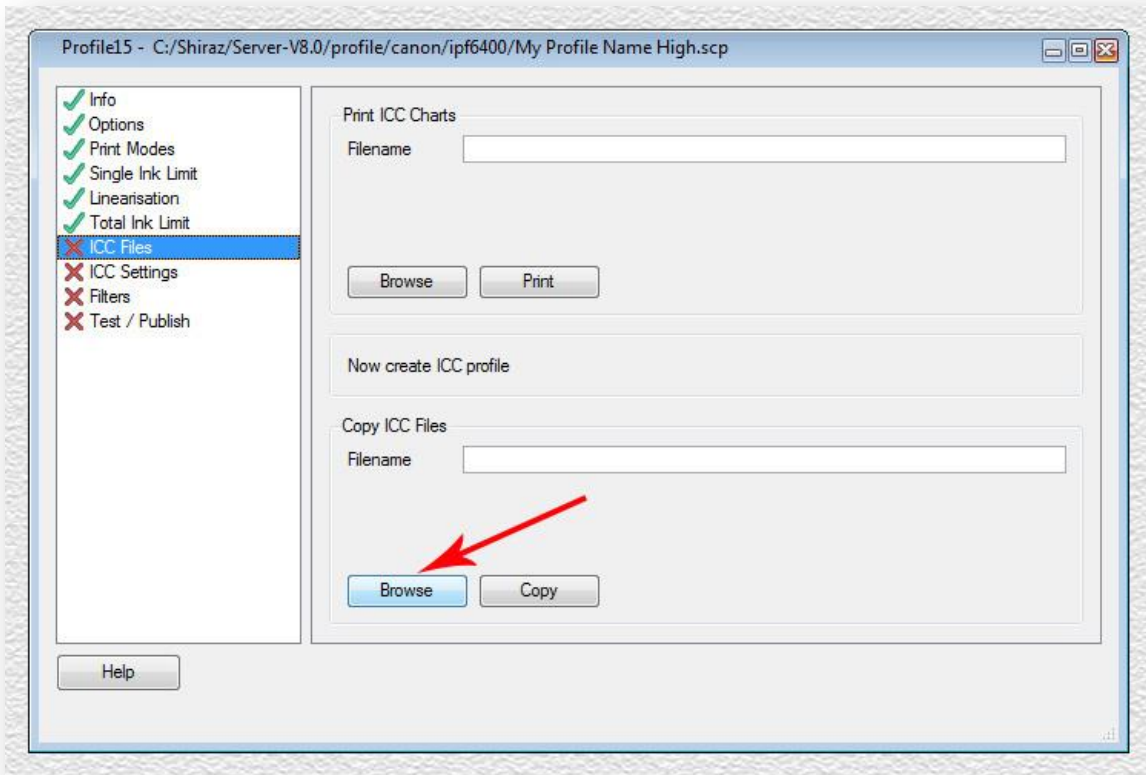
Right click on Info and check the green tick icon, Do the same for *Options* entry.

Now click on *Print Modes* and you will see the following screen. This may vary slightly depending on the actual printer model.



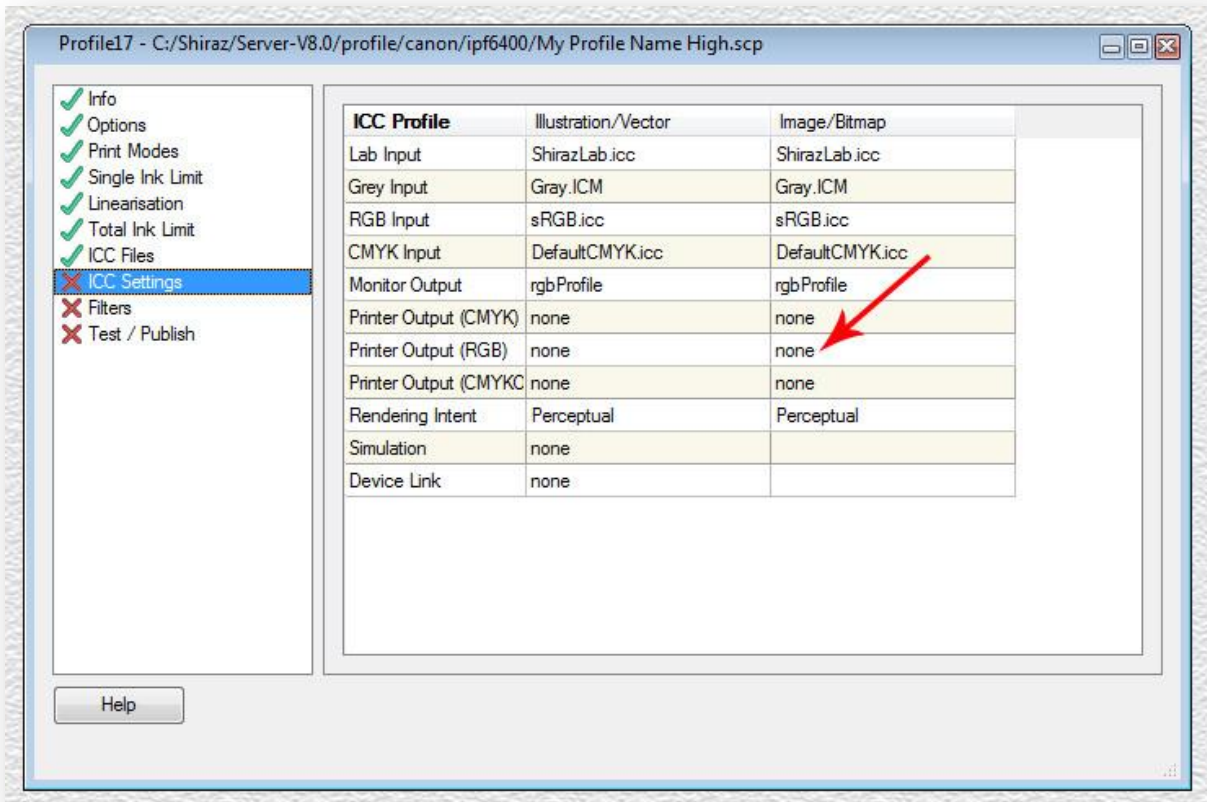
Now navigate down to the *Media Type* field and click on the drop down list under the *Value* column. You should now see a list of different media type as illustrated above. Click and select on the media type that you would want to use as the base for the profile table. This is usually the nearest media to the actual media being profiled. The same media type should be set on the printer itself from the front panel of the printer.

Check the green tick by right-clicking on the *Print Modes* entry to confirm that this step has been completed. Next click on the *ICC Files* entry to carry out this step.



Click on the bottom *Browse* button as shown above. Now find the ICC profile that you copied on to your desktop earlier. Select it and then click on *Open*. The full file path should now be shown in the *Filename* entry. Now click on the *Copy* button next to the *Browse* button and the profile will be copied to the correct profile folder for the Shiraz RIP.

Check the green tick icon for the *ICC Files* entry. Next click on the *ICC Settings* and you should then see the following screen:



Click on *none* for *Printer Output (RGB)* as indicated above. Wait a few seconds and you will see a list of profiles installed for the printer. Find the one you have just copied and click on it to select. Do the same for the other column *Illustration/Vector*.

You are now almost done. All that is left to do is to check the green tick icon for all remaining entries. Finally click on the *Test / Publish* entry and click on the *Date Stamp* button to add the time stamp for the profile table and click on the *Publish* button to finish the process.

You should now test the profile by printing your test images. Please bear in mind that because the ICC profiles were not made for Shiraz RIP, we cannot guarantee the quality of these.

HP printers

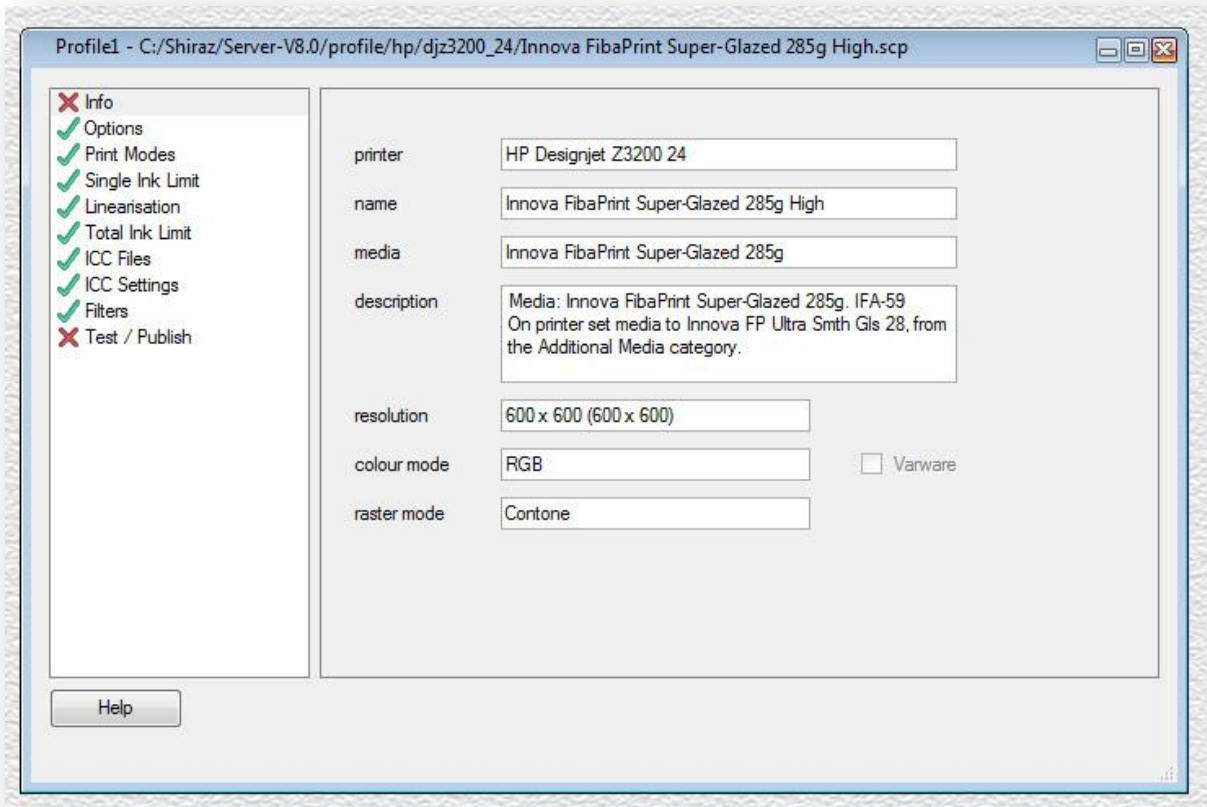
For HP printers it is very important that you actually install the profiles and follow the instructions given by the media vendor. This will install a profile on the printer under the Additional Media category.

For example if you have installed 'HP_Z3200ps_Innova_FP_UltraSmooth_Gloss_285.oms' media profile for the HP DesignJet Z3200 you should then find that media profile under the name 'Innova FP Ultra Smth Gls 28'. The full name is actually 'Innova FP Ultra Smth Gls 285gms' but the printer can only display 27 characters.

In the Colour module open the template "Profile Template for external ICC profiles High" and you will see the profile table below.

printer	HP Designjet Z3200 24
name	
media	
description	Description of media. On printer set media to xxxx
resolution	600 x 600 (600 x 600)
colour mode	RGB <input type="checkbox"/> Varware
raster mode	Contone

In the *name* field you type the name of the profile from the printer followed by High, so in this example, 'Innova FP Ultra Smth Gls 28' or you can write it in more human readable format way like 'Innova FibaPrint Super-Glazed 285g'. In the *media* field you now put the same as in the *name* field, but without word High appended. In the *description* field you should type a full explanation of the media and very importantly, what media type to select on the printer's front panel. Once you have completed this step, you should be able to see a similar window to the one shown below:



You are almost finished. Right click on *Info* and check the green tick icon. Similarly check the green tick icon for the *Test / Publish* entry, then click on *Date Stamp* and *Publish*. All that is left now to do is to test the profile. Remember that because the ICC profile has not been made for Shiraz, we cannot guarantee the quality of the profile.