

SHIRAZ RIP

SERVER V8 QUICK GUIDE

Server V8 Quick Guide

Installation

Shiraz Software products are supported on both major operating systems namely Windows and Macintosh.

The minimum system requirements for the Shiraz Server RIP V8 are listed below:

Windows

- MS Windows XP Professional / Vista Business / 7 Professional
- Intel Core Duo 2Gb RAM, 80Gb HD, USB2
- Monitor 1280 x 1024, 24 bit colour

Macintosh

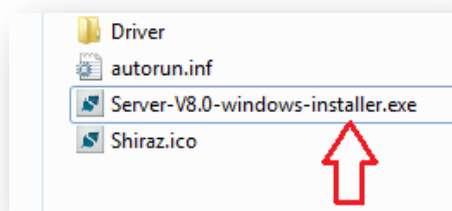
- Mac OSX 10.5.8 and higher
- Mac Pro (Intel) 2Gb RAM, 80Gb HD, USB2
- Monitor 1280 x 1024, 24 bit colour

There are two ways to get the Shiraz Server RIP V8 installers:

- *From Internet* : You can download the latest release installers from our official website www.shiraz-software.com
- *From the DVD*: This is included in the package we send you when you purchase your software.

Installing

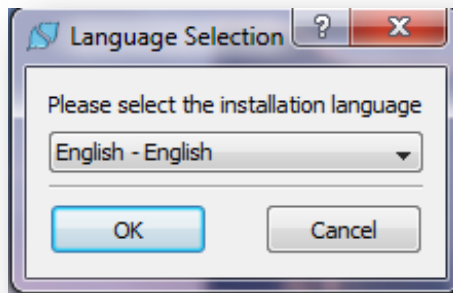
The Shiraz Server V8 Installer package is called “*Server-V8.0-windows-installer.exe*” for Windows platform and “*Server-V8.0-osx-installer.app*” for Mac OSX. On the Shiraz DVD the file is located on the root folder of the DVD:



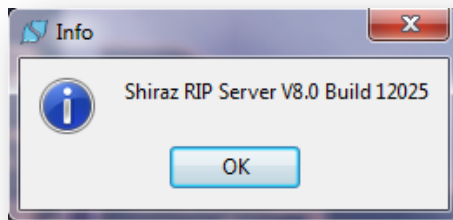
Note: You must be logged in as an Administrator user in order to install the Shiraz software.

To start the installation, run the installer file by double clicking on it. The first step is to select the language for your software:

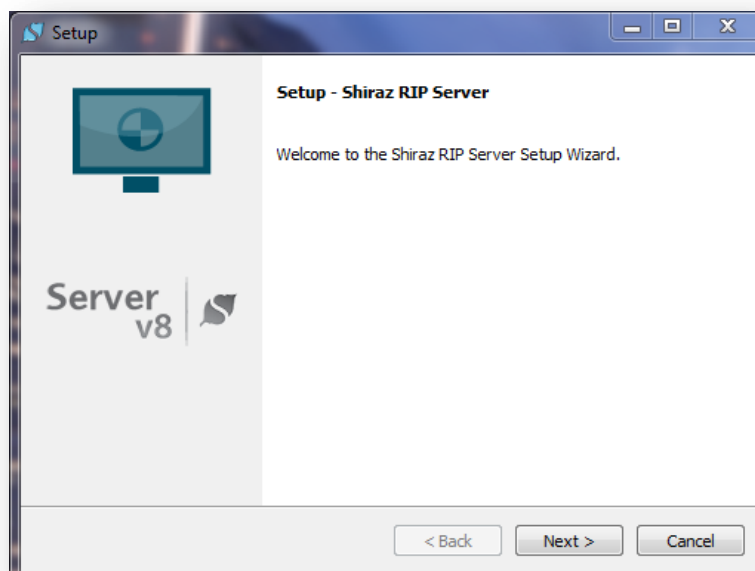
Server V8 Quick Guide



Select your language and click **OK** to continue. A message box will inform you about the version number and build number of the software you are installing. Please make a note of this as it is requested from you when you contact our technical support team. Click **OK** to continue.

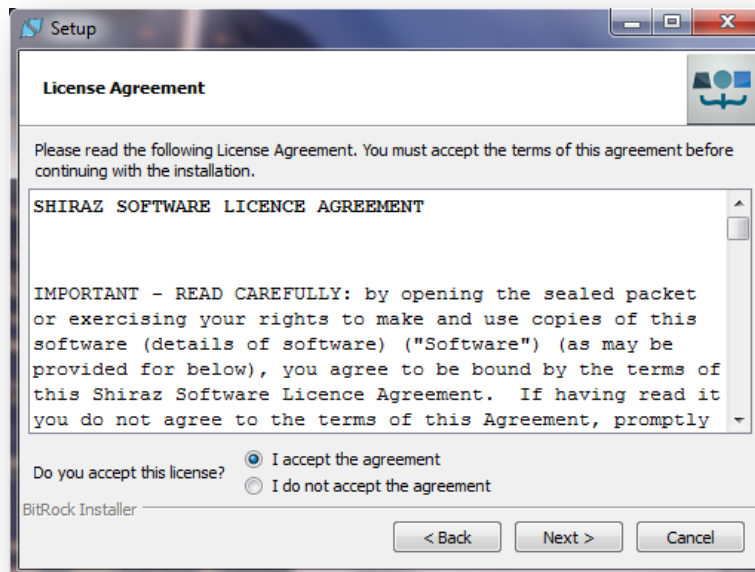


The setup wizard is launched. Click **Next** to continue.



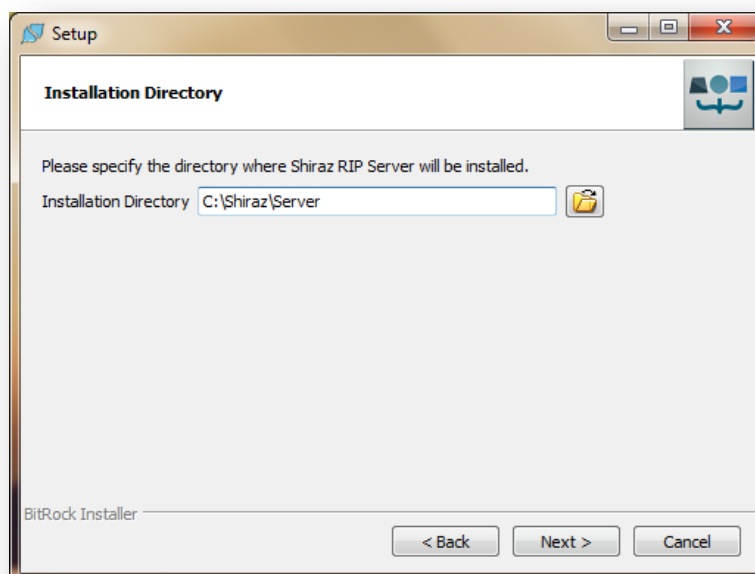
Server V8 Quick Guide

You will be presented with the Shiraz Software License Agreement. Please select and accept the terms if you are happy to continue. Click **Next** to go on to the next stage.



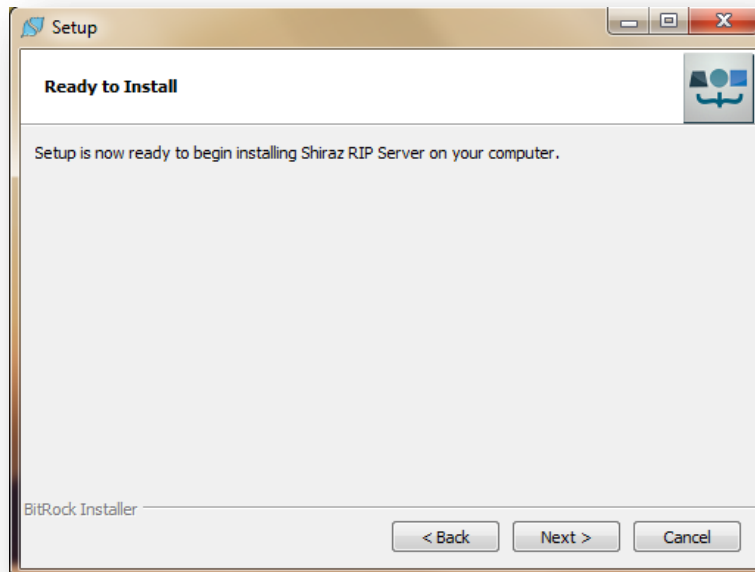
On the next page you are prompted to select the destination folder for the installation. By default the software is installed on `C:\Shiraz\Server` on *Windows* and `/Applications/Shiraz` on *Mac*. Select the desired destination folder and click on **Next** to continue.

Note: Please make sure not to overwrite an existing installation of an older Shiraz version. e.g. v6.7. This would result in a corrupted installation. Shiraz V8 is designed to run alongside of an older version.

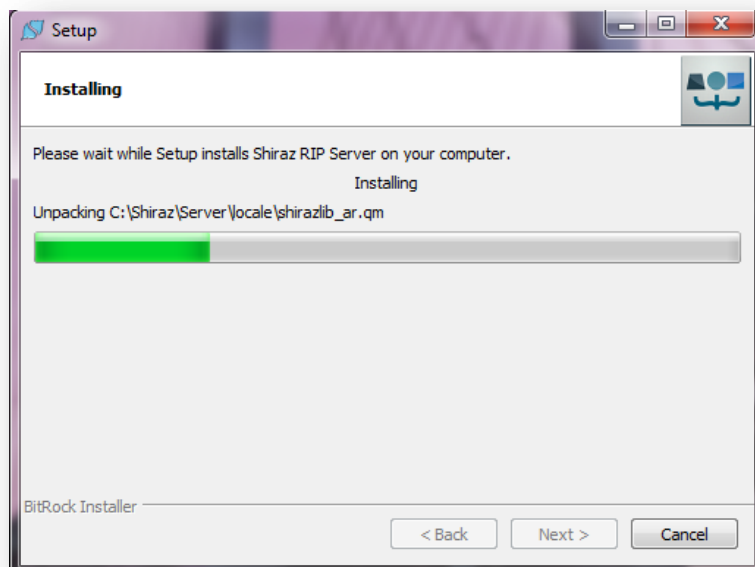


Server V8 Quick Guide

Setup Wizard is now ready to install the software on your system. This would take approximately 3-5 minutes. Click on **Next** when you are ready to start the installation process.

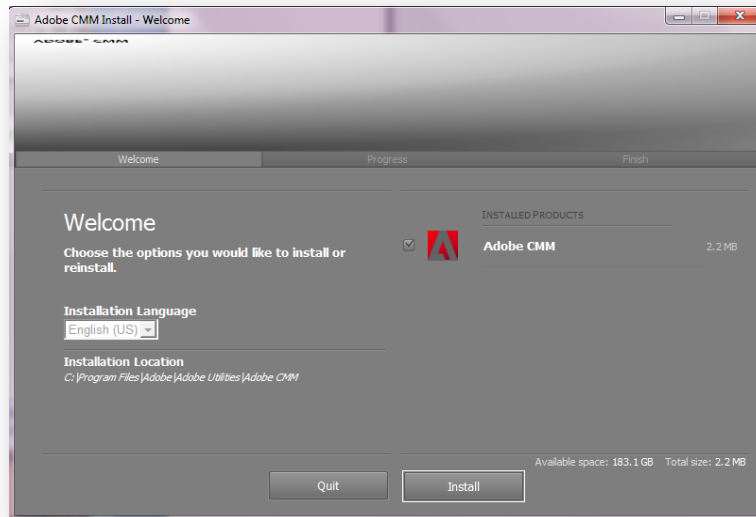


You can examine the installation progress and files being installed.

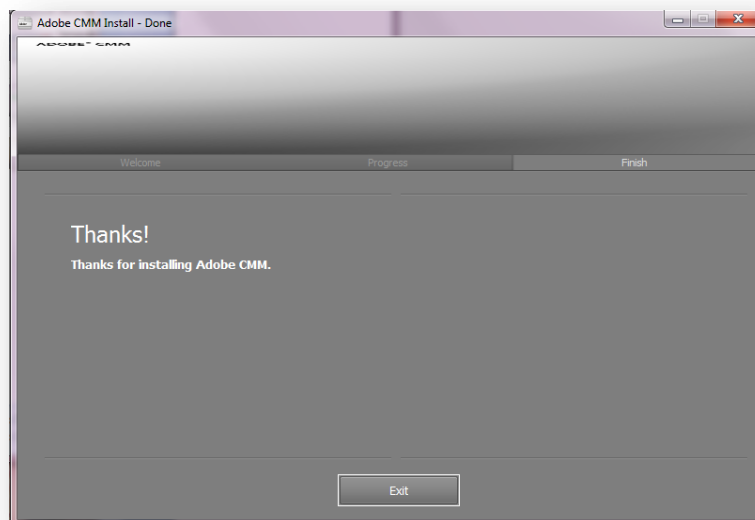


As a part of the Shiraz software installation it is necessary to install the Adobe CMM module. You will be prompted in a separate window to confirm Adobe CMM install. Click **Install** to continue.

Server V8 Quick Guide

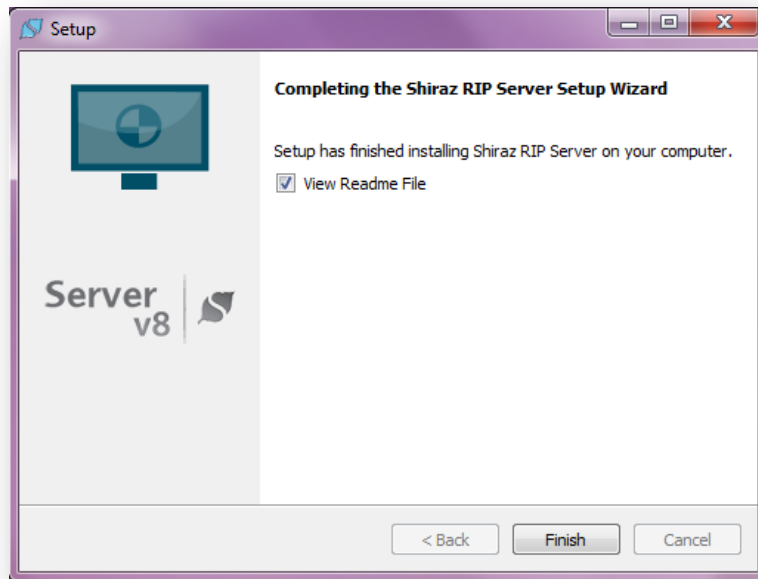


Once Adobe CMM installation is finished, click **Exit** to continue.

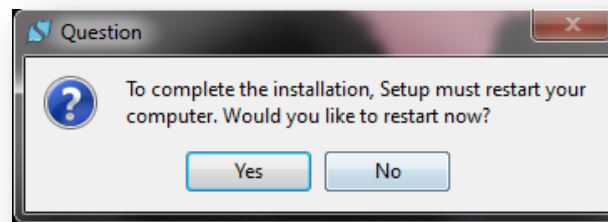


Now you have successfully installed your Shiraz software. Click **Finish** to end the close the Setup Wizard.

Server V8 Quick Guide



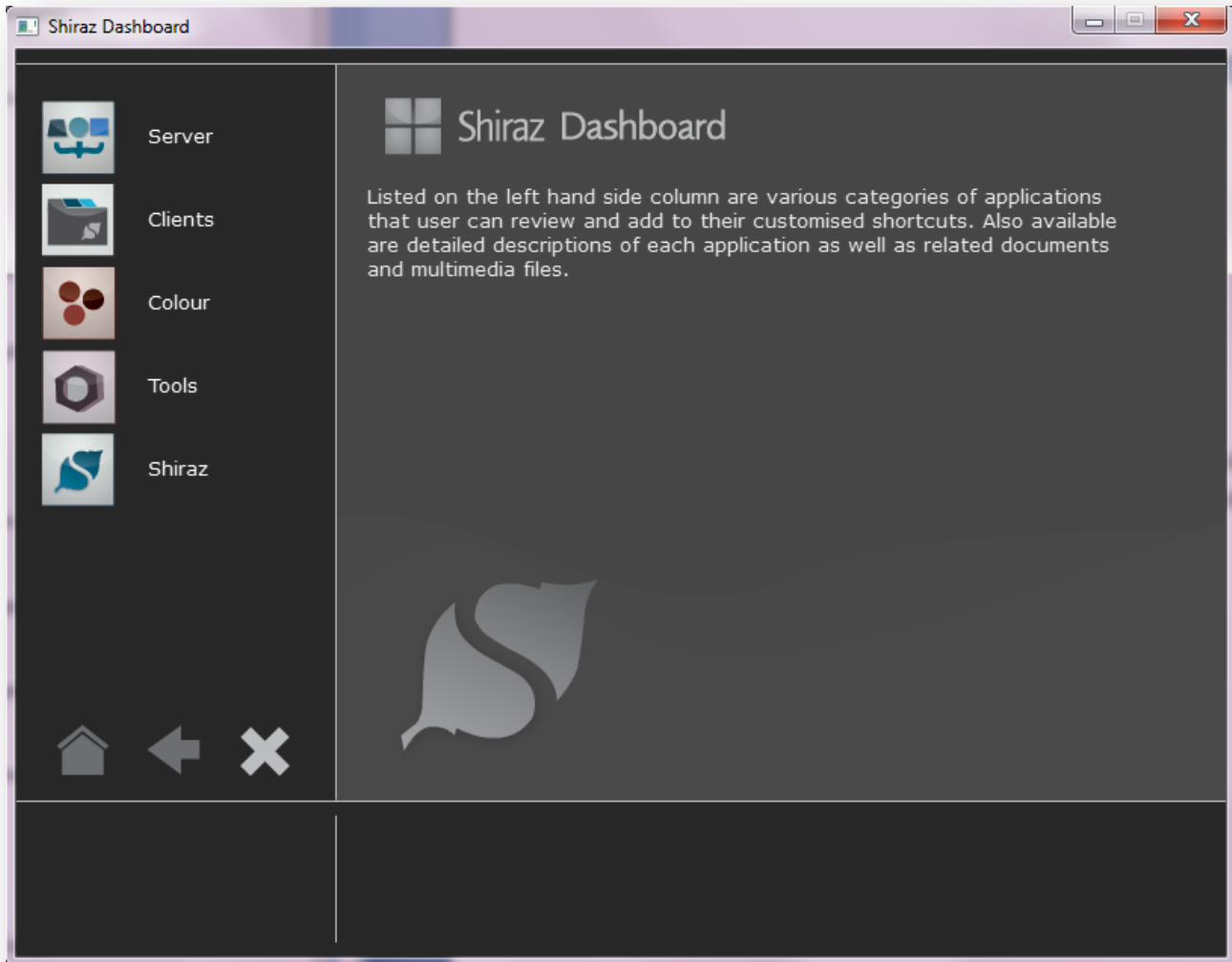
As part of our installation, you will be prompted to restart your system. We highly recommend you to do a complete system restart before starting to use your software. Click **Yes** to restart your system or **No** if you would like to do it at a later time.



That's it! You are now ready to start using your Shiraz software. We will next cover how to print your first job using your software.

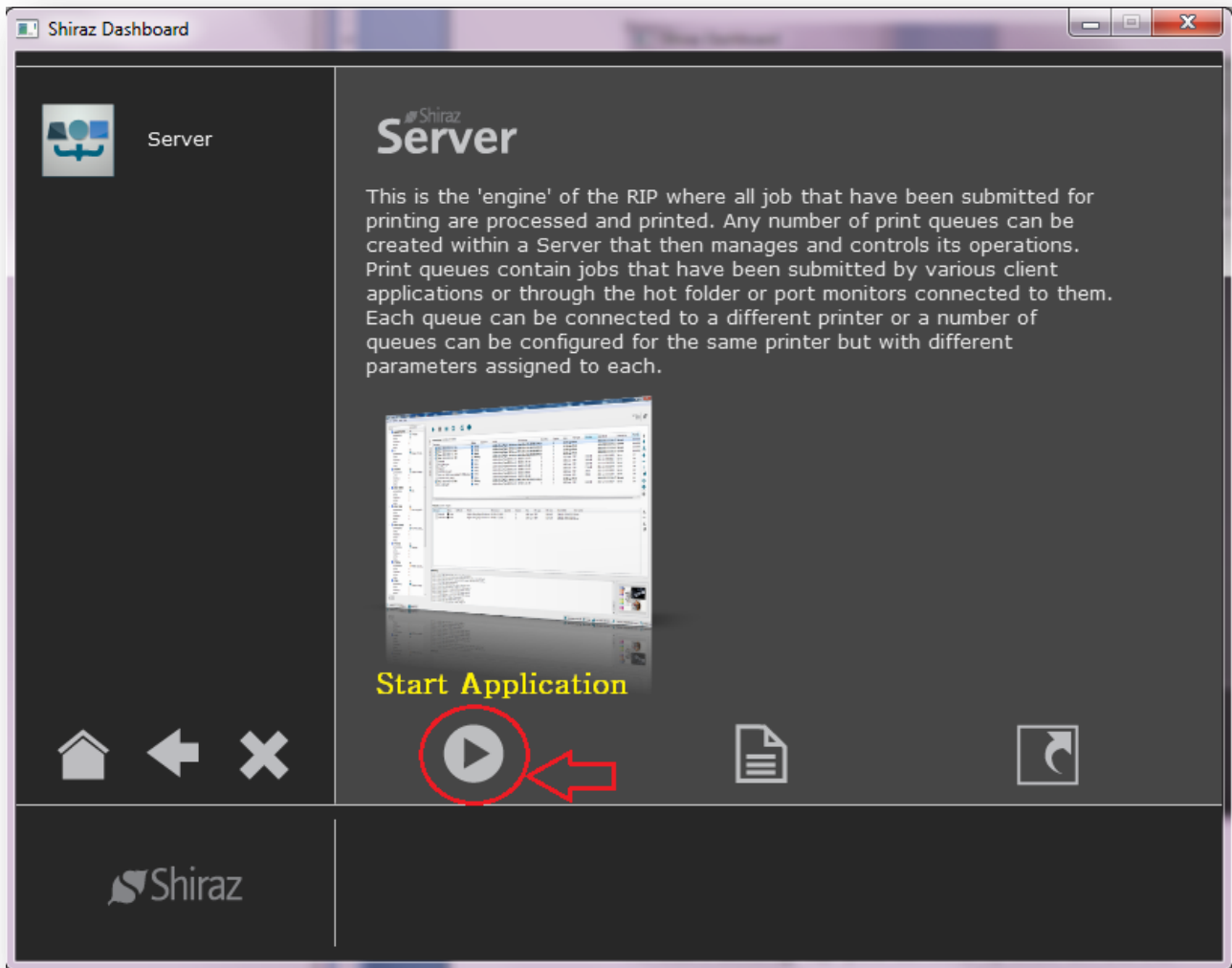
Software Configuration and Usage

The installer creates a Shortcut on the desktop to run the Shiraz Dashboard. Shiraz Dashboard is a new utility introduced in Shiraz V8 that provides access to all the modules and tool in our product suite in an elegant and easy-to-use manner.



To start configuring you software for your particular setup, the first step is to run the Server application. Click on Server icon to go to the server page and then click on the *Launch Application* icon to launch the Server.

Server V8 Quick Guide

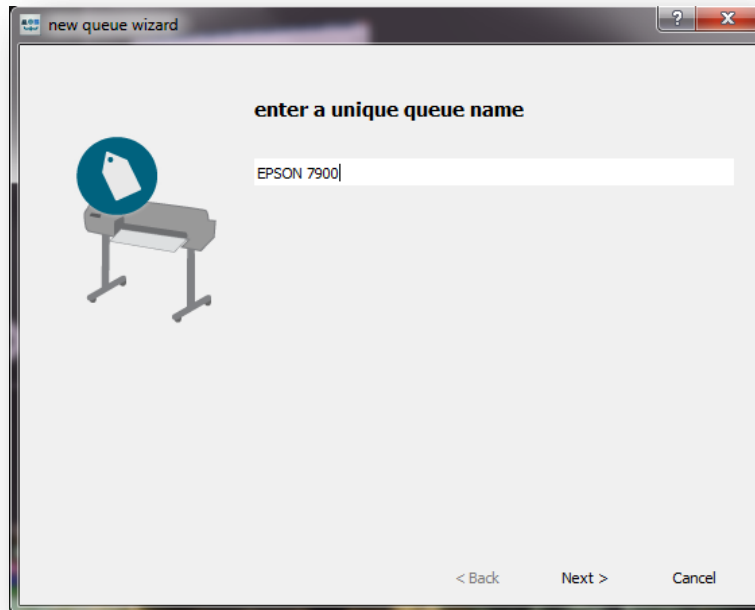


Server module is the core module in the Shiraz printing system. The main concept that everything revolves around is the *Queue* system, which to simplify represents a specific printer. Each queue's function includes jobs management, printing, nesting, ripping, cancelling, printer status, job accounting and many more that are then all managed through the Server module.

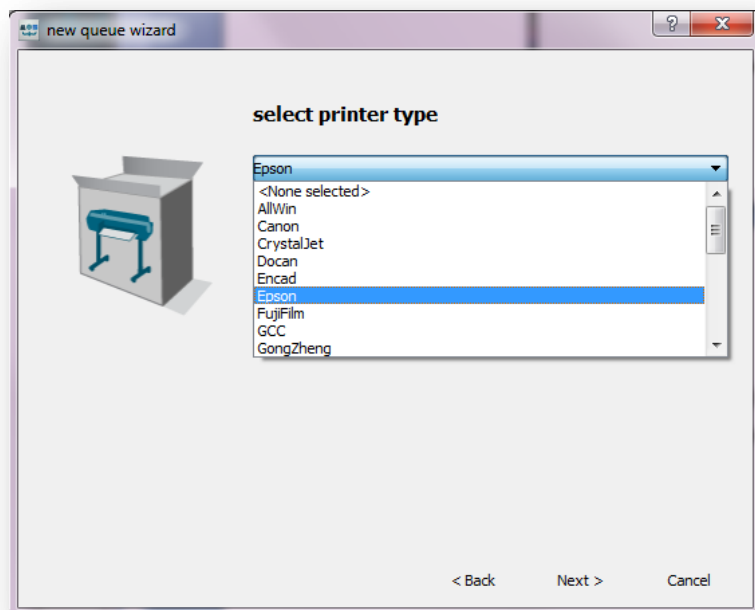
The first time that you run the Server module you will be prompted to setup at least one printer queue. This is handled by the Queue Wizard utility. On the first screen you will be asked to enter a unique name for your queue that would represent your printer. For example, *EPSON 7900 ART ROOM* could be the name of a queue for an *Epson Stylus Pro 7900* printer located in the art room. Click **Next** to continue.

Note: Queue names entered are converted to capital letters regardless of upper-case/lower-case entry by the user. This is to make the Queue name more pronounced on the Server tree.

Server V8 Quick Guide

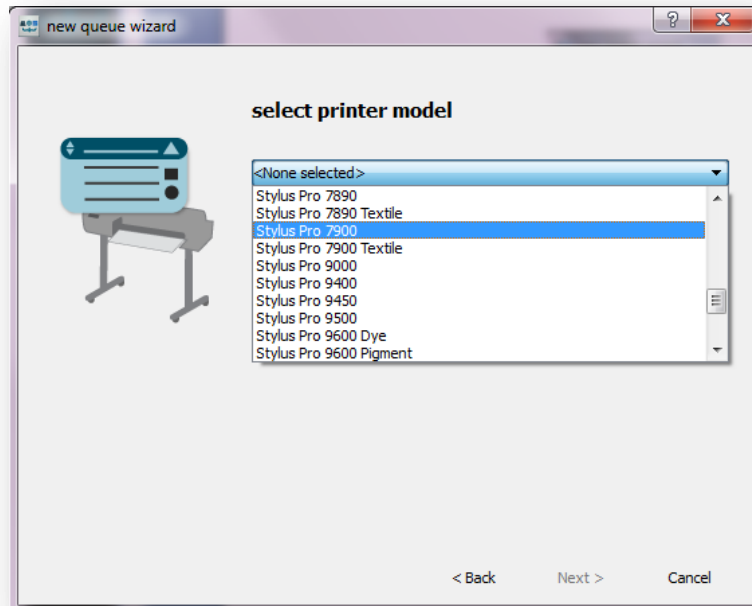


The next step is to specify the manufacturer of the printer you are creating a queue for. In our example we are creating a queue for an Epson Stylus Pro 7900 therefore we must select Epson as the manufacturer. Click **Next** to continue.



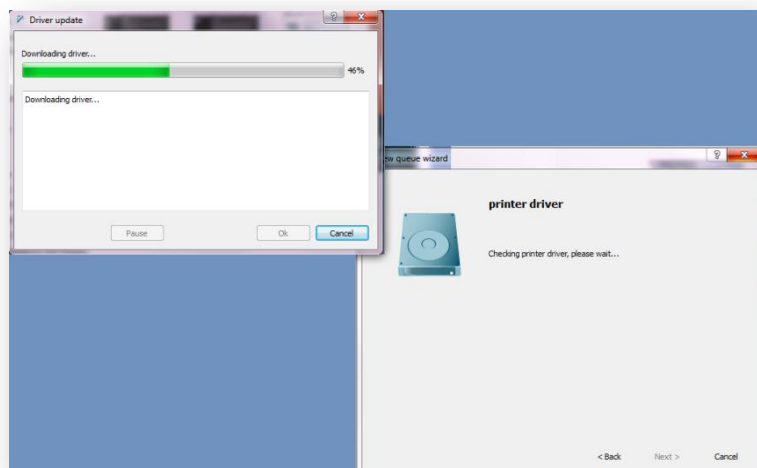
Server V8 Quick Guide

Next you are presented with the list of all the printer models we support for the specified manufacturer. Select your printer model from the drop down list and click **Next** to continue.



Once the printer type and model are specified, Queue Wizard will start installing the driver for the printer. Drivers can be installed from two separate sources:

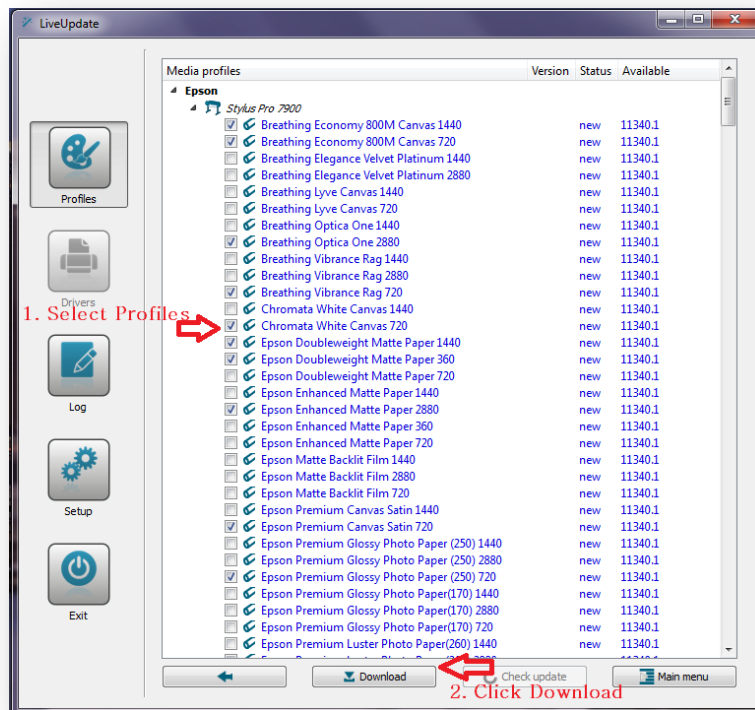
- *Cloud Storage*: For those users that are connected to the Internet, all Shiraz printer drivers and media profiles are on the dedicated fast online storage. This will ensure that users get access to the latest up-to-date driver for their printer anytime and anywhere in the world.
- *Installation DVD*: For those users who do not have access to the Internet drivers are included in the installation DVD. Please make sure that the DVD is inserted in the drive before you run the Queue Wizard.



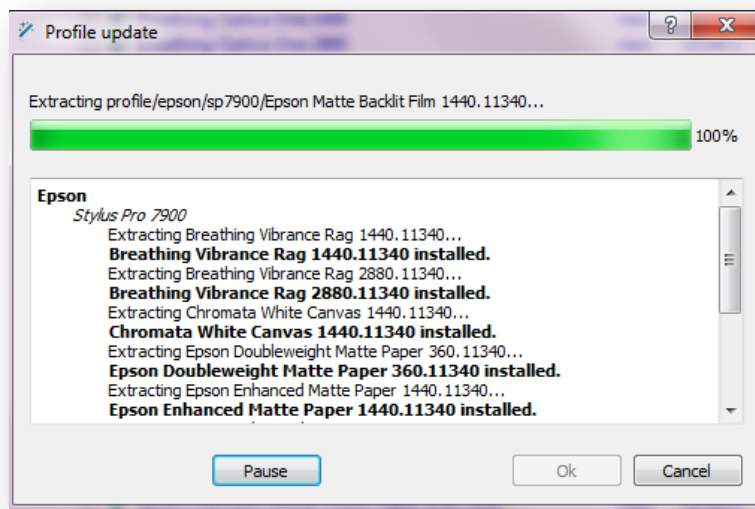
Server V8 Quick Guide

After the driver is installed for your printer, you can then download *Media Profiles* for your printer. Media profiles are used by Shiraz software products to ensure that the print output has the highest colour quality, accuracy and consistency.

On starting up, LiveUpdate looks at the cloud storage database and loads all the profiles available for the selected printer. Choose as many profiles as you require from the available list and then click on the **Download** button to start installing them on your system.

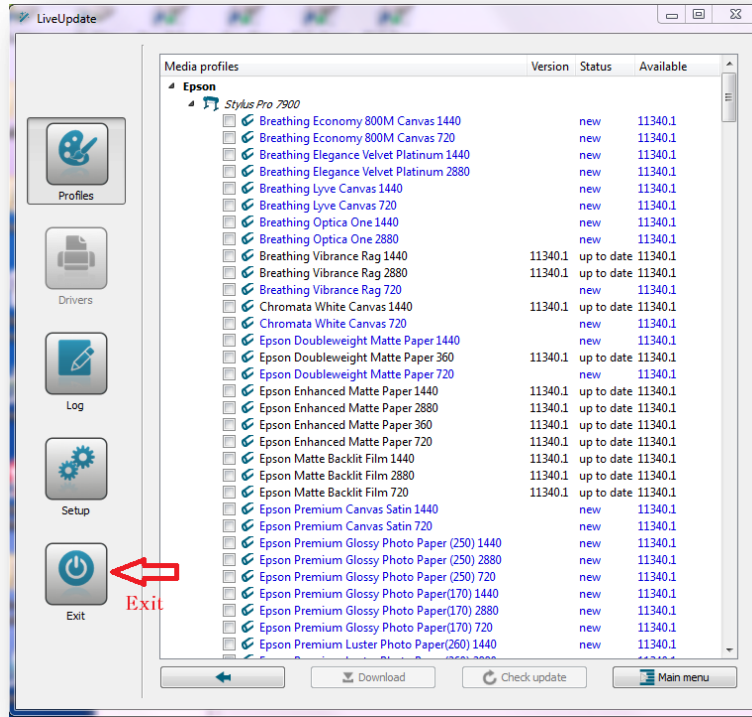


A new window will open which displays the installation progress for all profiles you have selected. Once all profiles are installed click on **Ok** to go back to LiveUpdate utility.

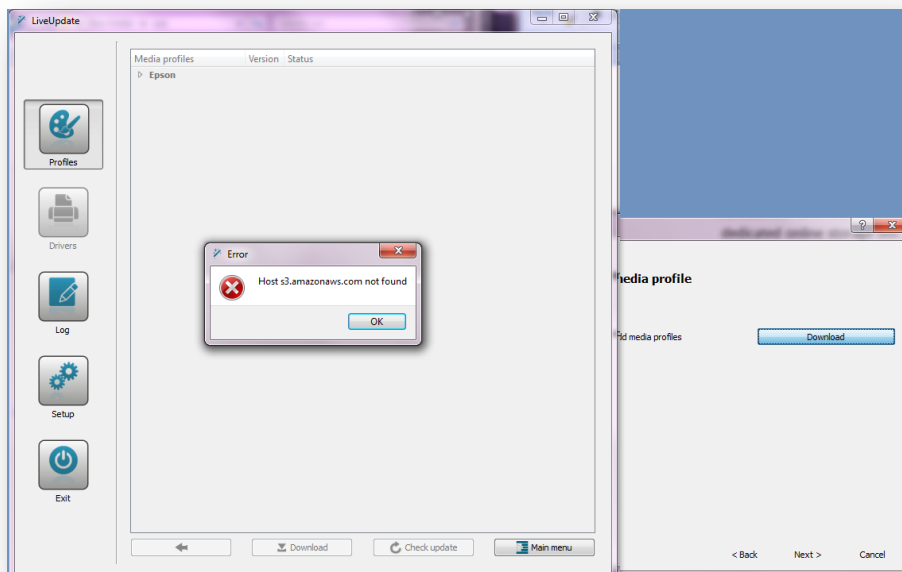


Server V8 Quick Guide

You have now successfully installed profiles for your printer. If you want to install more profiles you can repeat the Select-Download steps, otherwise click on the **Exit** button to close the LiveUpdate utility.



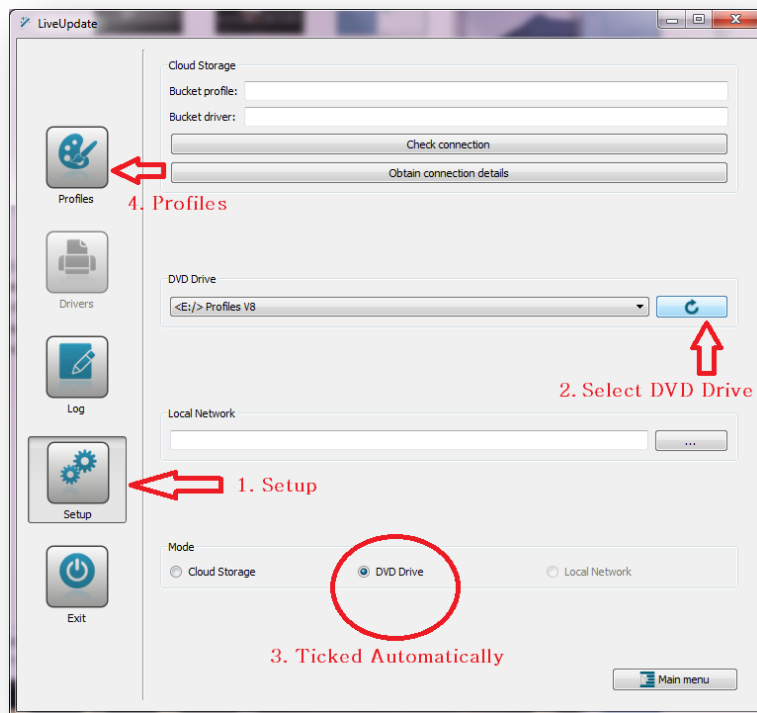
Media Profiles DVD: We include a Media DVD in the software package we ship .For the users without internet connection, insert your profile DVD. Then click on Download button to launch the LiveUpdate Utility.



Server V8 Quick Guide

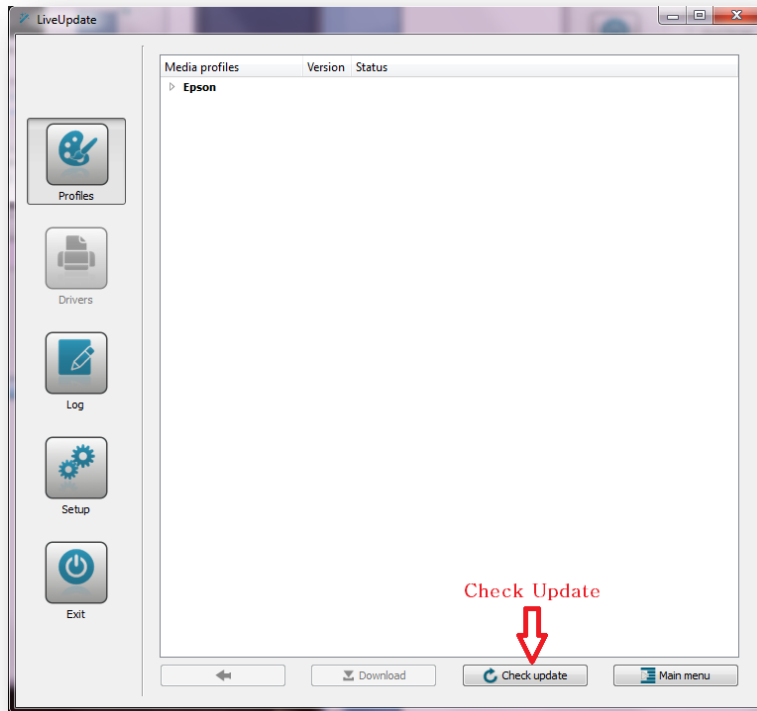
On entry to LiveUpdate, you will be shown the “*Host S3.amazonaws.com not found*”. This is the standard error message indicating that cloud storage is inaccessible. Ignore this error as in this scenario you know that you do not have an internet connection.

From LiveUpdate left hand side menu select **Setup**(Step 1). In the setup page, look for DVD Driver section and then press the **update**(step 2) button next to the DVD Drive list. Ensure in the mode section *DVD Drive* option (step 3) is selected. Then click on the **Profiles** (step 4) button.

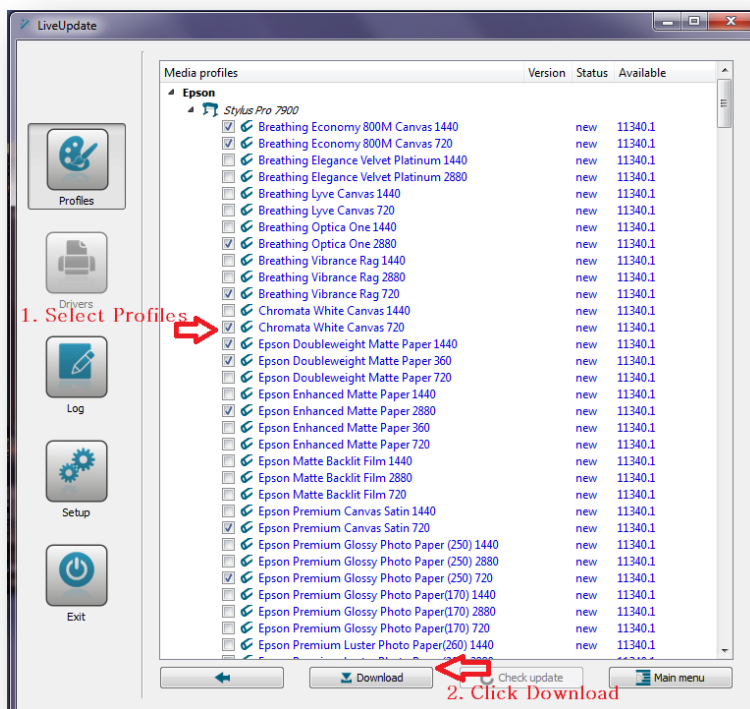


In the profile page, click on **Check Update** button right at the bottom to get a list of all profiles on the DVD.

Server V8 Quick Guide

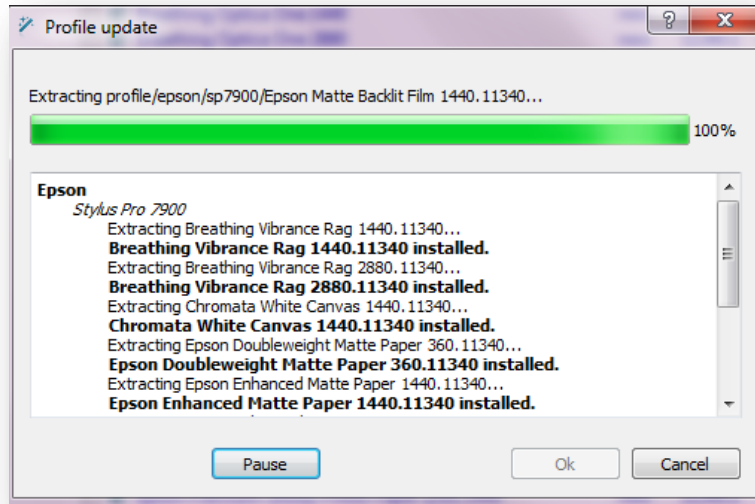


From the profiles list, select as many profiles as you need and once ready click on the **Download** button to install the profiles on your system.

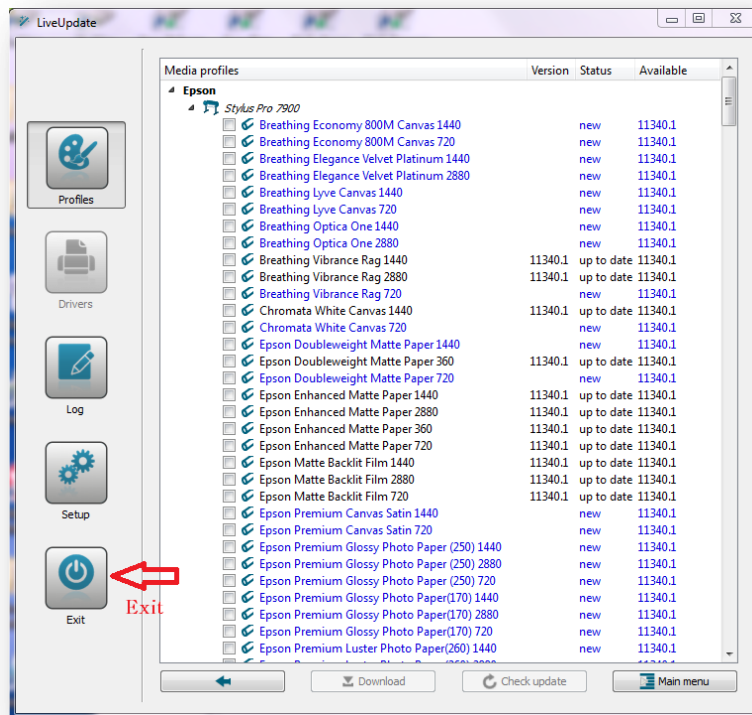


Server V8 Quick Guide

A new window will open up and display the installation progress for the profiles you have selected. Once all profiles are installed, click **OK** to finish.

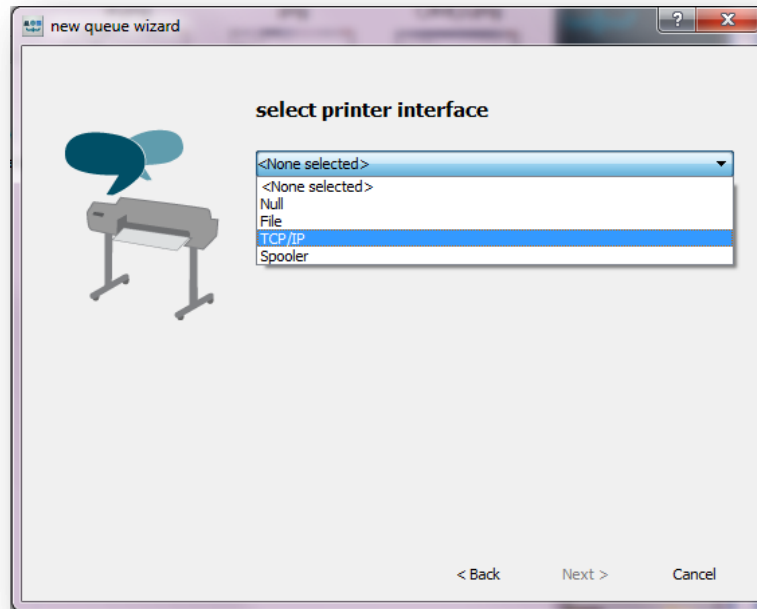


You have now successfully installed profiles for your printer. If you want to install more profiles you can repeat the Select-Download steps, otherwise click on the **Exit** button to close the LiveUpdate utility.



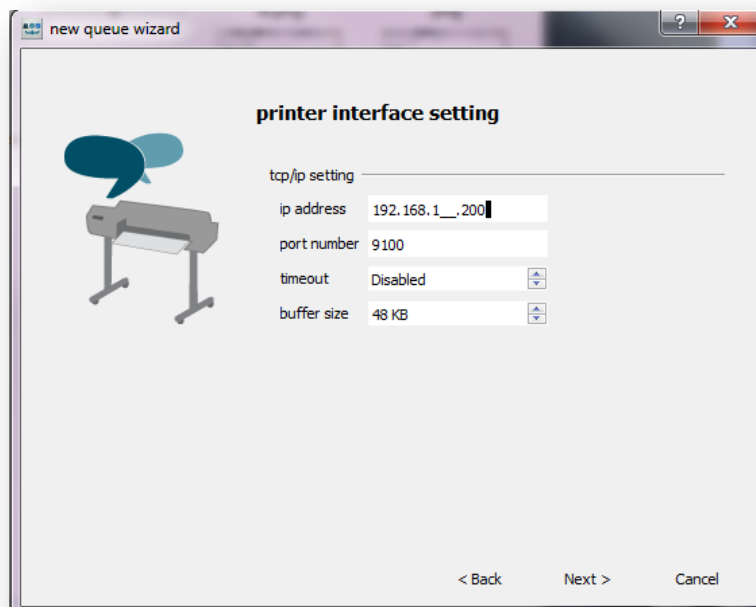
Server V8 Quick Guide

The next step after downloading driver and profiles is to setup your Queue interface. Queue interface is the physical connection between your computer and the printer. Examples of Queue interfaces are TCP/IP, USB, FireWire and SCSI Ports. Select the appropriate interface for your printer and select **Next**.



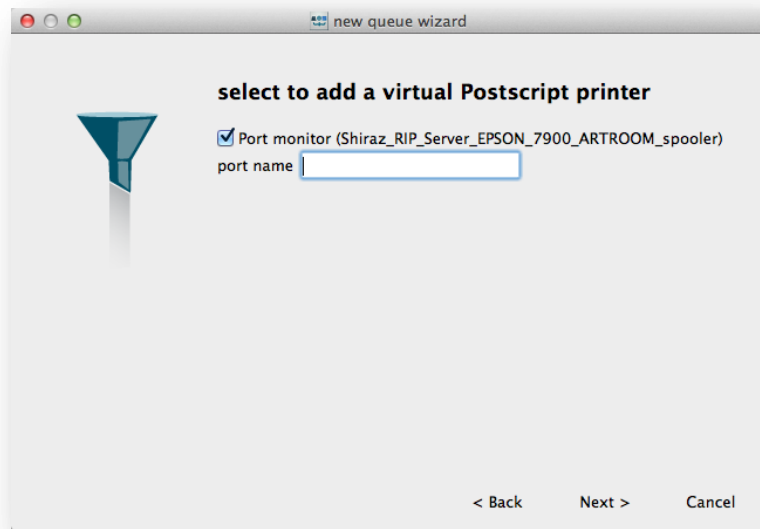
Next step is to configure your interface setting according to your printer. This is different for each interface. Here we have selected TCP/IP as interface type so the settings displayed are specific to TCP/IP.

TCP/IP connections use IP addresses of devices on a network to communicate. Enter your printer IP address in the *ip address* field. In our example our printer has an ip address of *192.168.1.200*. Leave the rest of the settings as default as these would satisfy almost all cases.



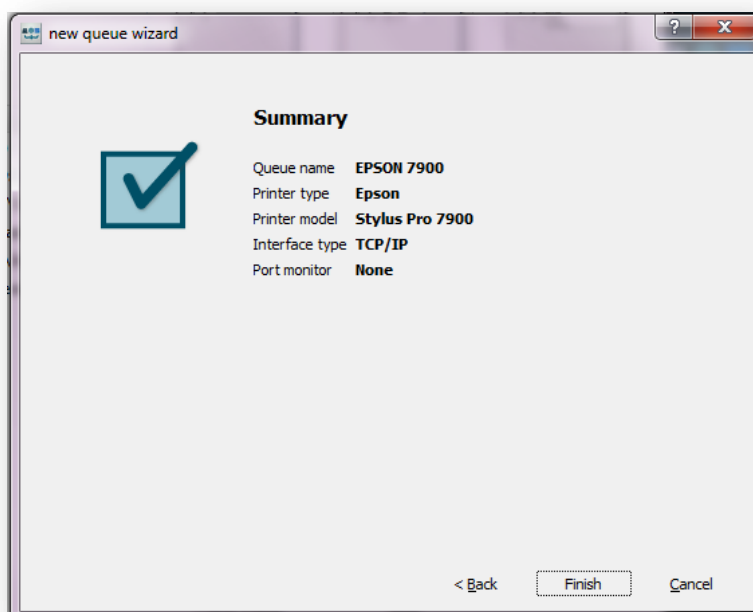
Server V8 Quick Guide

Click **Next** to go to the next step. Here you can optionally create a virtual Postscript printer driver for the queue that allows direct printing from applications.



The wizard automatically assigns a name for this print spooler based on the given queue name.

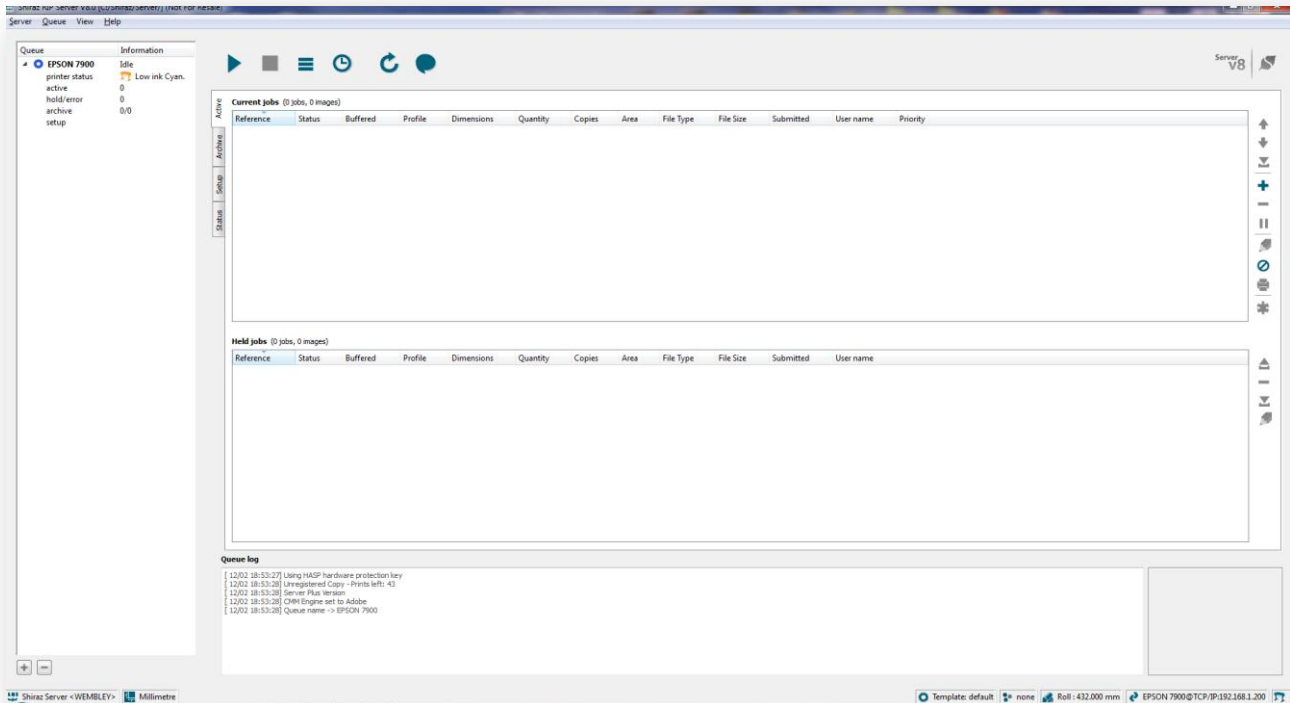
Now you are just one step away from finishing creating your Queue. Queue settings are displayed in summary so you can quickly go through them and make sure they are correct. You have the option of going back and re-adjusting your setting if needed. Once you are happy click on **Finish** to create the printer queue and exit the Queue Wizard.



Server V8 Quick Guide

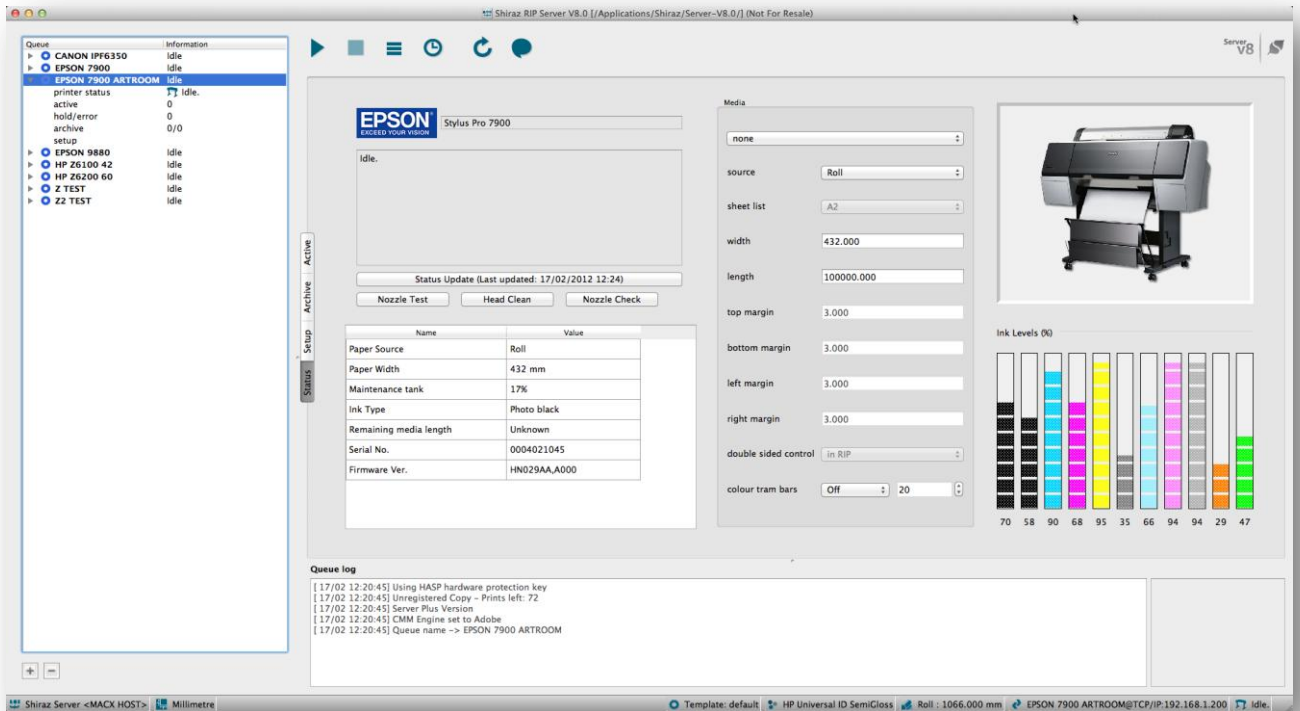
Printing your first job

Server application is now launched and you can see your queue on the left hand side. Now you are ready to start creating jobs and printing.



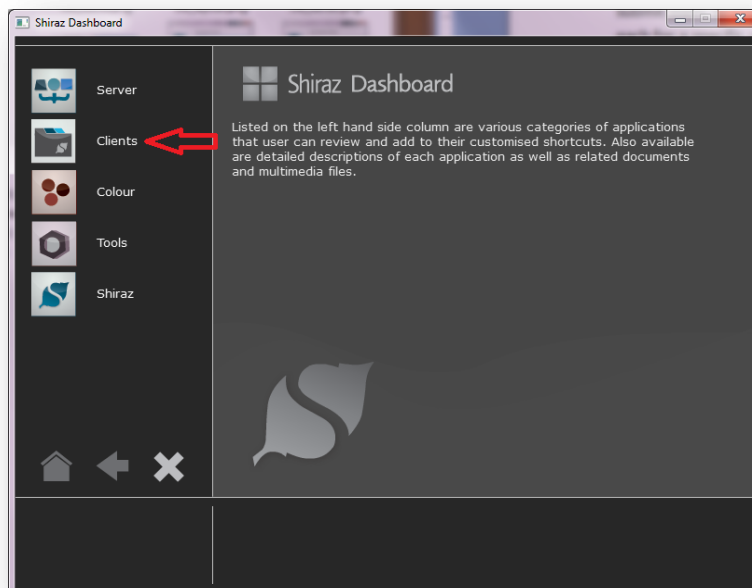
Shiraz Server is a client/server based RIP. Client modules are used to create jobs and submit them to the Server for printing. The server application has an integrated status tab for each printer queue that retrieves information from the printer constantly (polling) and uses this information to set various parameters such as the roll size, media type and printer's current state. The status tab can be accessed by clicking on its tab or on its name on the queue tree.

Server V8 Quick Guide

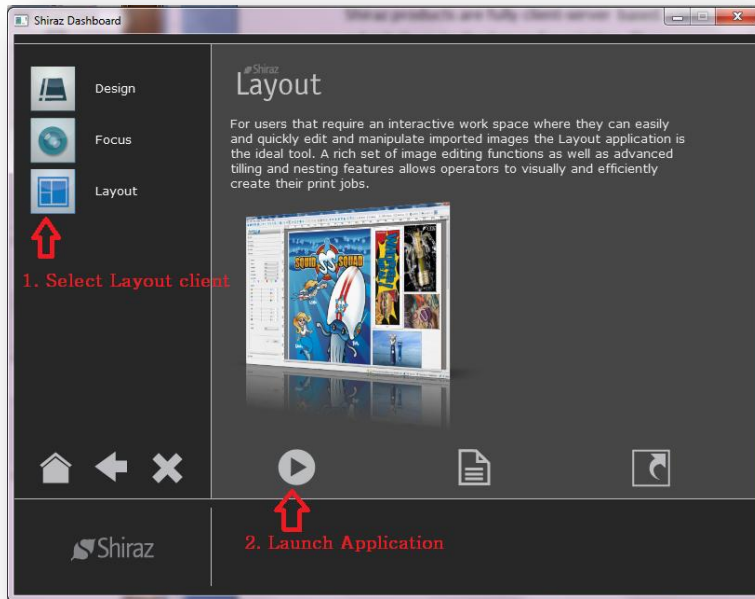


There are several different client modules available each designed for a specific application such as display, signage, photo and others. Here we will demonstrate submitting a job from our Layout client.

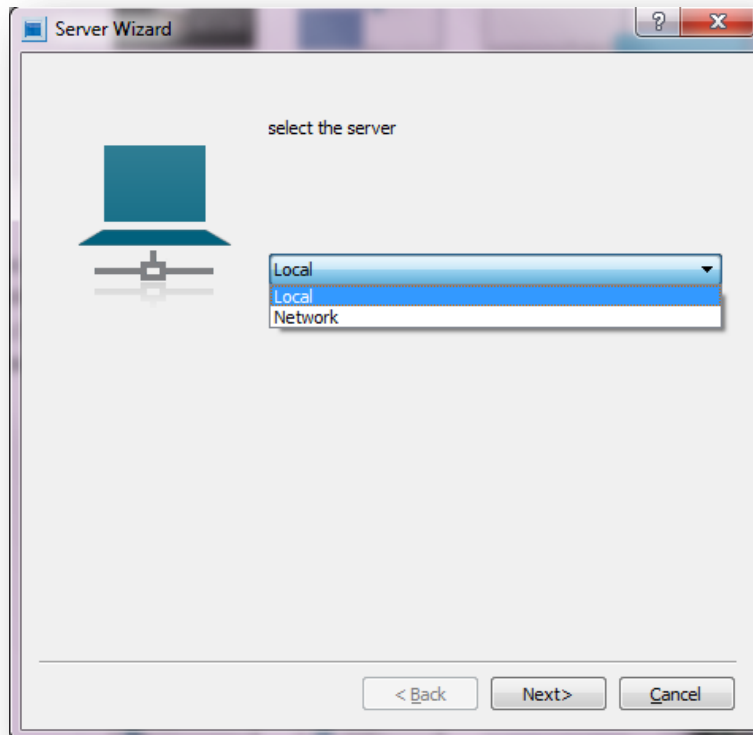
In the Dashboard main window click on **Clients** category. Then from the clients list select Layout client and click on the *Launch Application* button. This will start the Layout module.



Server V8 Quick Guide

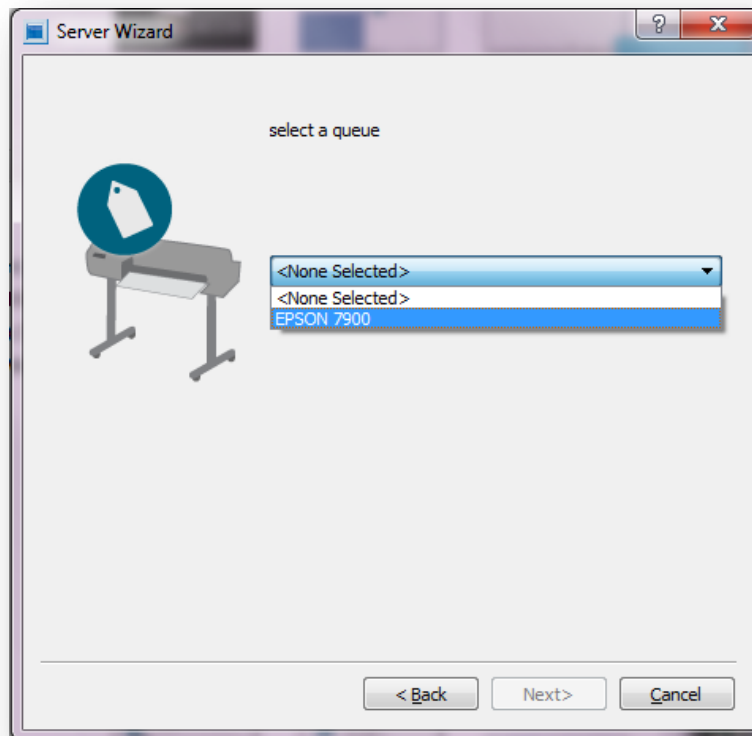


The first time you run any client application, you have to specify the location of the Server that you want to connect to and the Queue you want to submit jobs to on that Server. The Server Wizard will prompt you to select whether your server is on the local machine or is on a separate machine on the network. In our case both the client and server are run from the same computer therefore we select *Local*. Click on **Next** to continue.

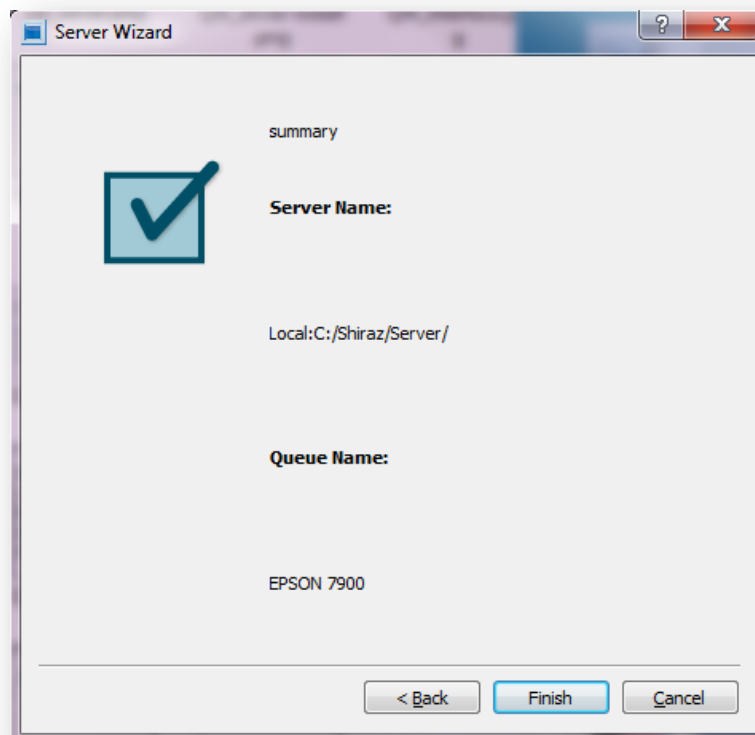


Server V8 Quick Guide

Next is selecting the queue you want to connect to on the Server. Select the queue from the list and click on **Next** to continue.



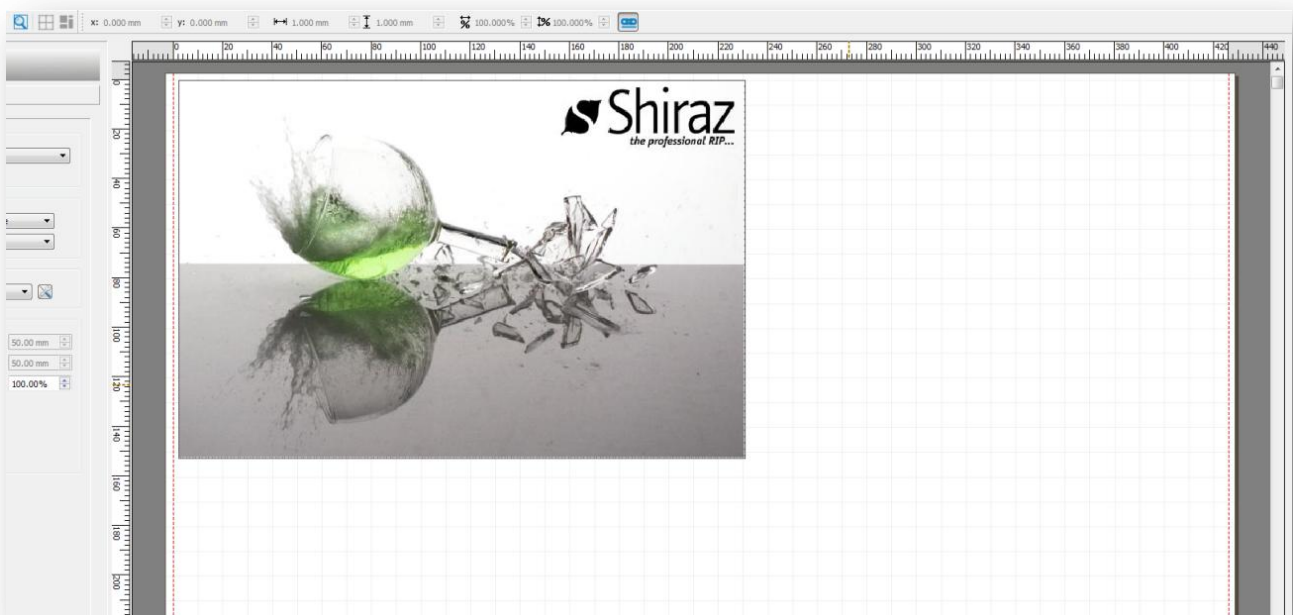
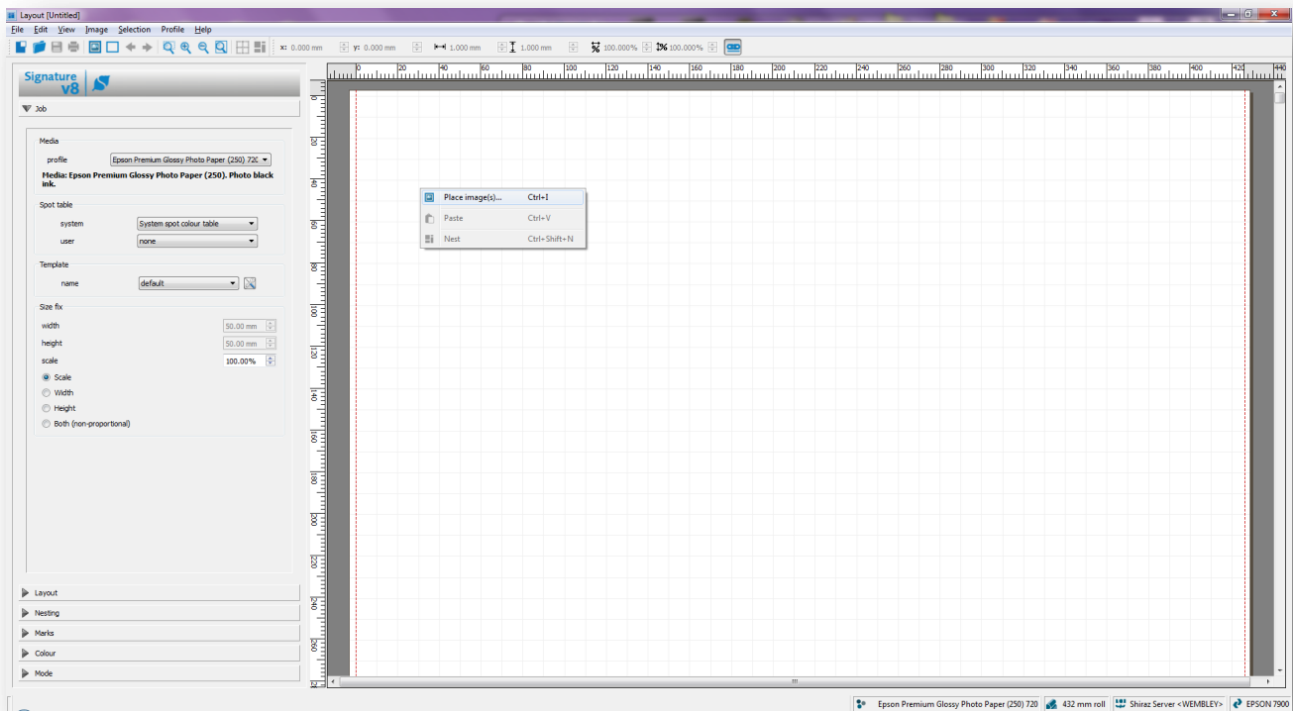
Server Wizard will display a summary of the Server and Queue you have selected. Click on **Finish** to open the client application.



Server V8 Quick Guide

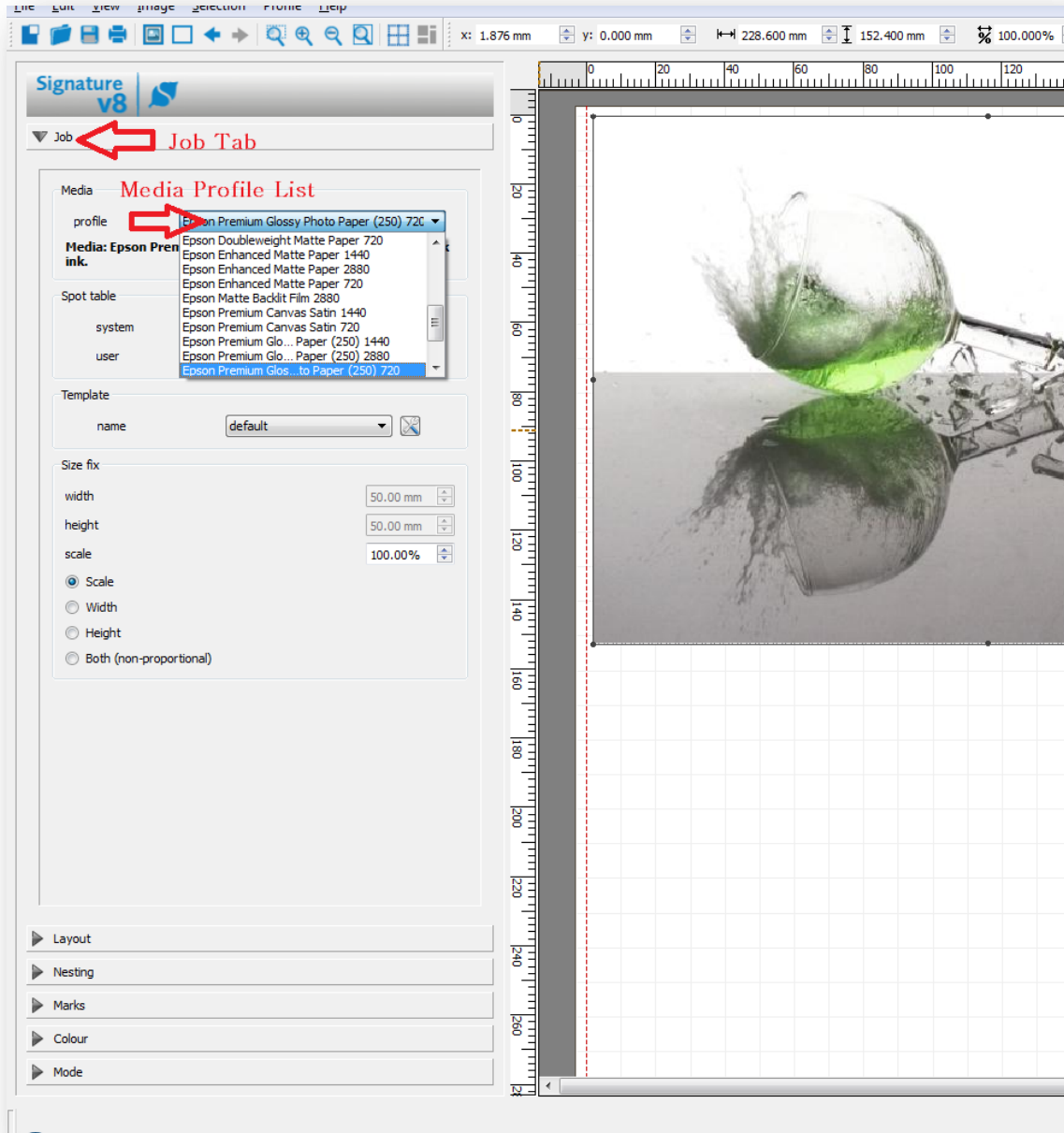
The Layout client is open now. As you can see it has many features, some are useful for everyone and others provide specific solutions for certain production workflow. In this document we will just cover a few basic features that are necessary to create and submit a job.

Right click on the Layout workspace and select *Place image(s)* to import an image.



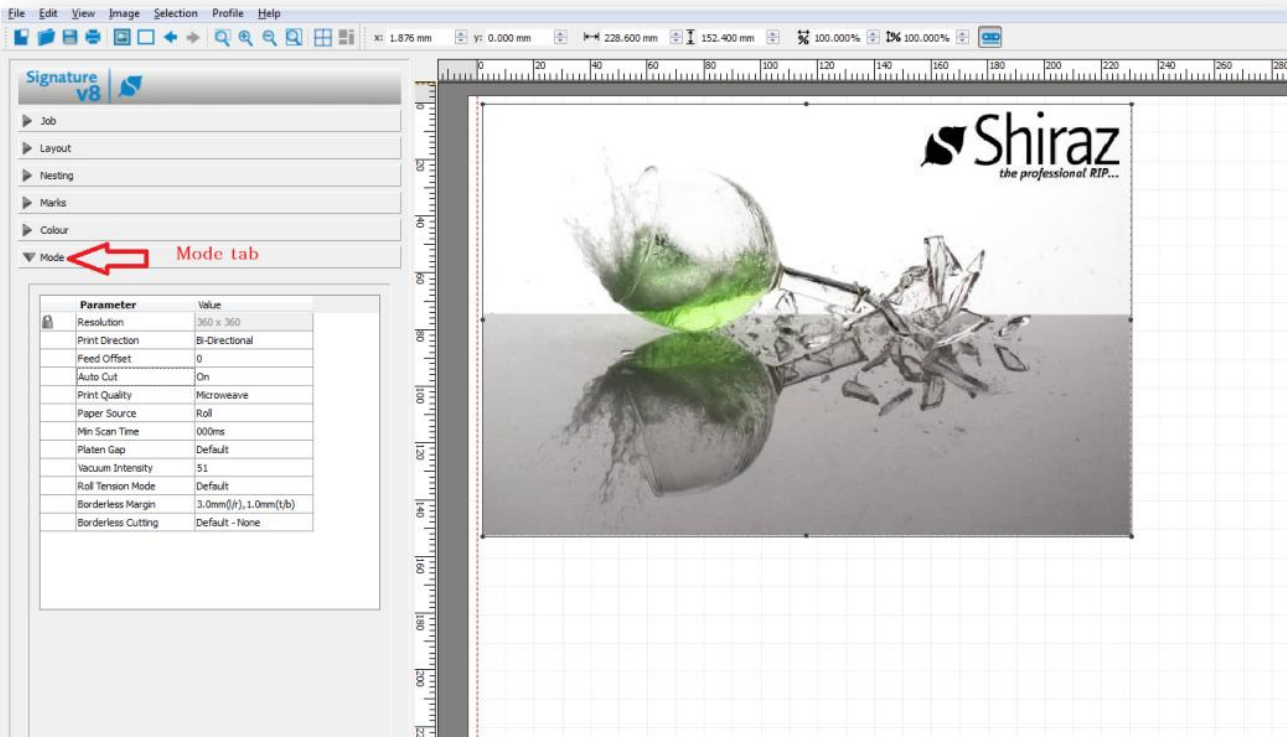
Server V8 Quick Guide

Next step is to select a media profile to use for printing the image. In the *Job* tab, find the *Media* section and select a profile from the profile list. This profile list is generated from the list of profiles you installed earlier on.

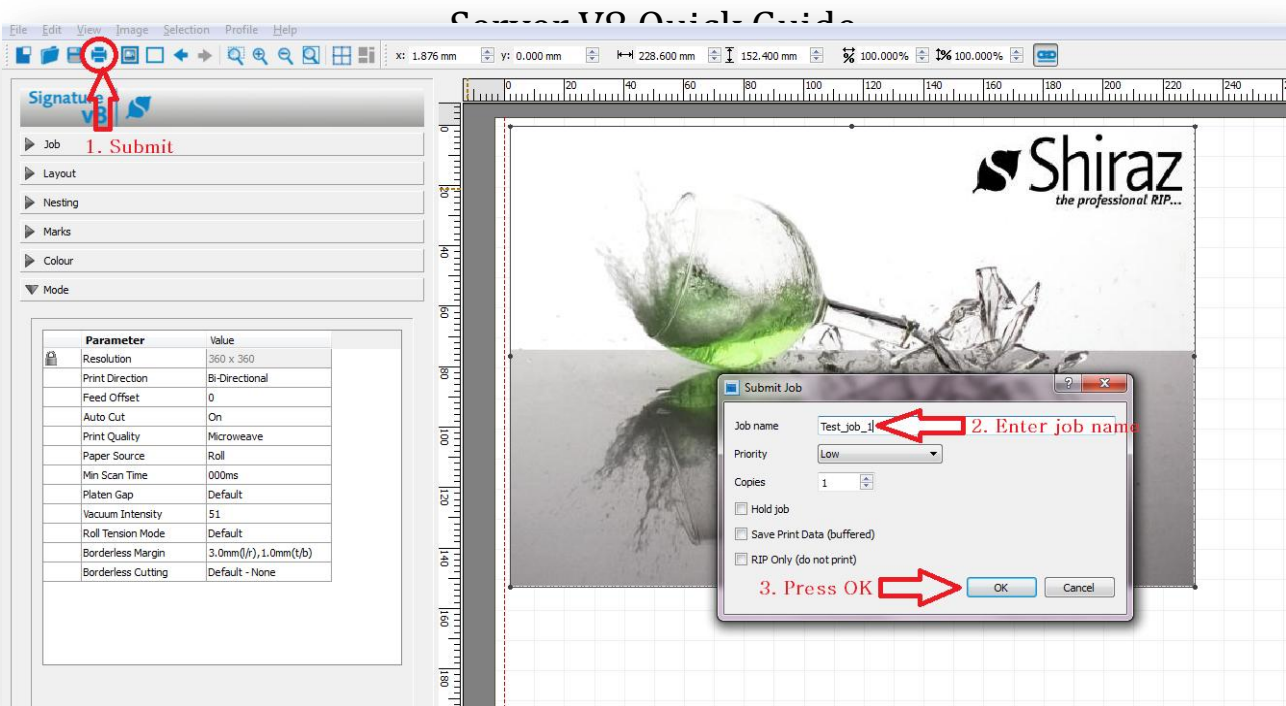


Server V8 Quick Guide

Now you are ready to submit the job to the printer. But before that it is a good practice to have a look at your print modes and ensure they are correctly set. Print modes are printer specific settings that affect the print output. For example cutting on or off, heaters temperature adjustment, feed correction and UV light adjustment to name a few. The profile sets up all your print modes by default and in most cases you do not need to change anything.



To submit the job to the printer queue on the Server, click on the Submit button (printer icon) at the top right hand corner. Once you press submit you are prompted to enter a name for your job. Layout client sets up a default name for each job. This job name is used as reference in the Server for job management and accounting, so make sure to enter an appropriate name that easily distinguishes this job from other jobs. In our example, we name our job *Test_job_1*. Do not worry about all the other settings. Leave them as default for now. Press **OK** and the job is then submitted to the Server.

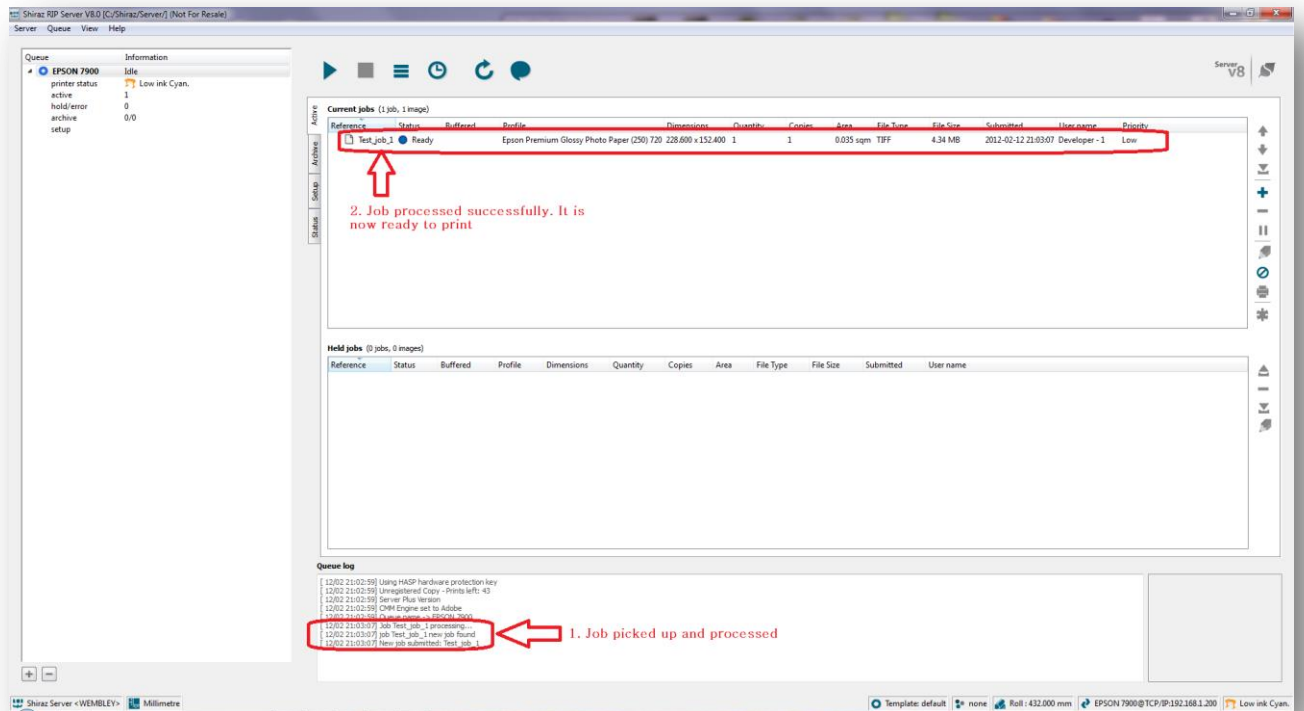


If the Server module is open, it will pick up the job immediately after it has been submitted. Otherwise the job is picked up the next time you open the Server module. The Server will process the job and run some basic checks on the job. These include:

- *Whether a profile is selected or not:* By default jobs without profile are put into Hold section. This behavior is configurable.
- *Whether the profile selected is appropriate for the current printer media:* This is called media matching. Jobs that do not pass this test are put into Hold section. This behavior is configurable.
- *Whether the job width is less than or equal to current printer media width:* This is called width matching. Jobs not passing this test are put into Hold folder.

If the job passes all these tests it will be added to the Active section of the Queue. All jobs in the Active section are ready for printing.

Server V8 Quick Guide

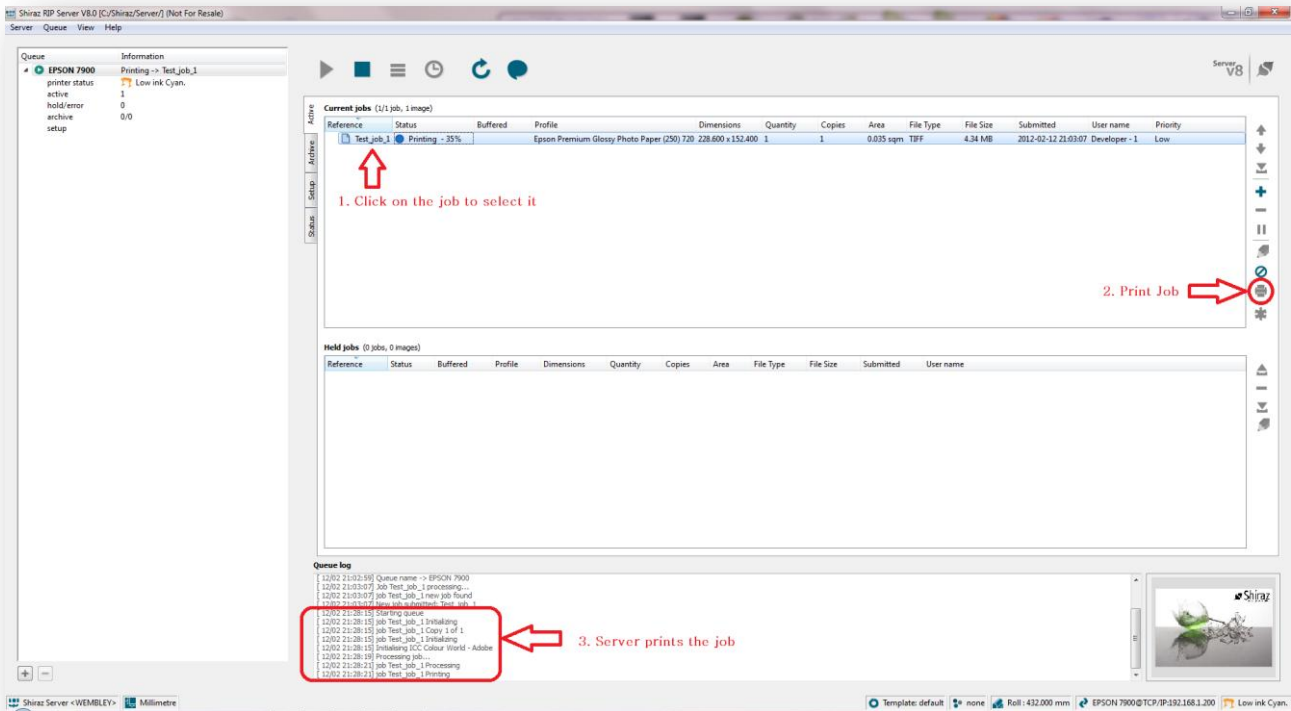


Jobs in the active section can be handled in several ways:

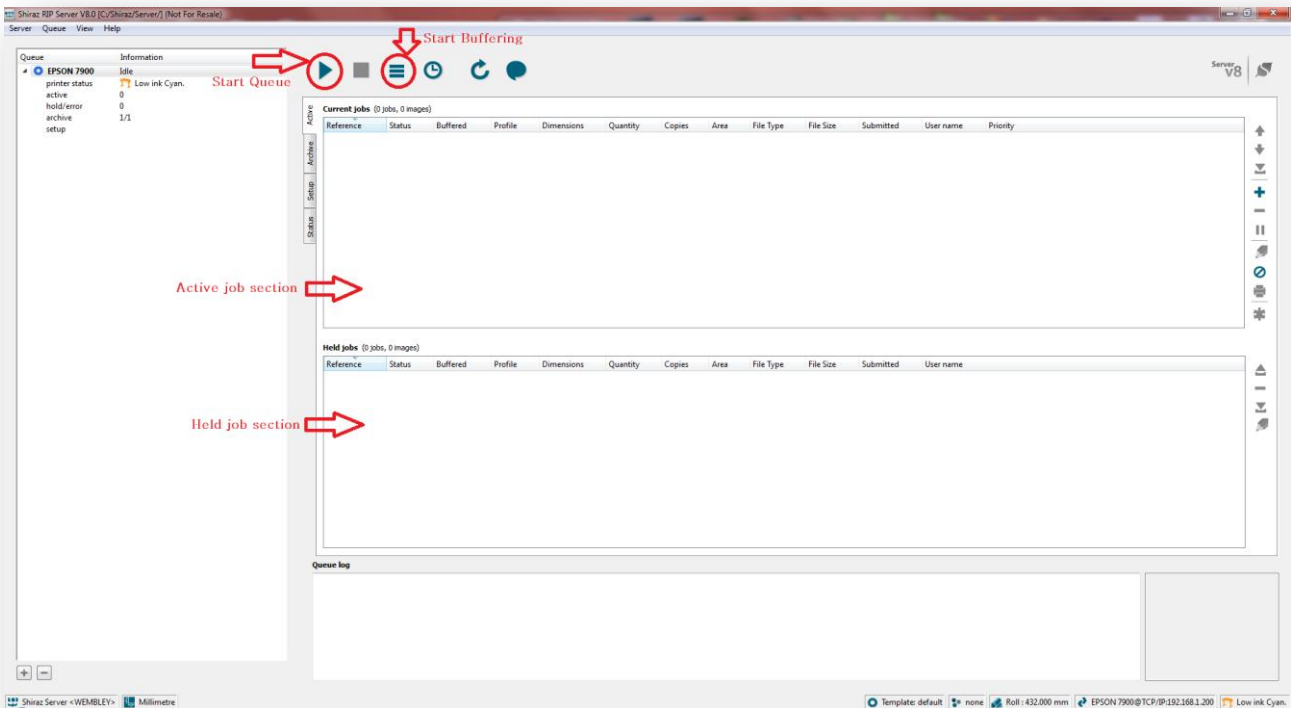
- **Print immediately:** As soon as you are ready to print the job, press the *print job* button and the Server starts processing and printing the job immediately.
- **Buffered and print later:** Buffered jobs are processed and ready-to-print. This is especially useful if you are dealing with large size jobs that take time to rip. Press the *Start Buffering* button at the top and the Server starts processing the job. Job is kept in the Active section until you press the print job button.
- **Leave in the Queue:** This means jobs are not touched at all and are left to be handled later on.
- **Print on the fly:** In this scenario the Server is already running. So as soon as a job arrives, it is processed and printed immediately. To put the Server in this mode press the *Start Queue* button at the top.

In our example here we just want a quick print. So we click on the *print job* button. Job is processed and printed immediately.

Server V8 Quick Guide



Start Queue and Start Buffering buttons, and Active and Held job sections are shown in the following image:



Server V8 Quick Guide

Shiraz Server module and Clients Modules are very powerful and professional tools with many features. This document provides an introduction to a quick setup and print. For full details of each module refer to the relevant documentation where full features are described in details.